

VOLTAMETER, COPPER

Two copper plates, size 120 x 50 mm, each fitted with a terminal on wooden support. Complete with glass jar, 150 x 100 mm. ht x diam.

CE1128



CE1128

VOLTAMETER, COPPER

With two outer 75 x 50 mm and a central 70 x 45 mm copper plates, suspended from copper wires fitted with 4 mm connectors and supported by two insulated bars. With glass jar, 150 x 100 mm.

CE1130



CE1130

HOFFMAN VOLTAMETER

The glass unit has two connected limbs, each graduated 50 x 0.2 ml, with stopcocks, with a tube and a funnel shaped reservoir bulb.

CE1145/1 Borosilicate glass
CE1145/3 Neutral glass

ACCESSORIES

PLATINUM ELECTRODES

Platinum wire or foil fused into glass rod with internal lead, with rubber stopper and glass protection tube, per pair.

CE1148



CE1148

CARBON ELECTRODES

Carbon electrodes in rubber stoppers, fitted with terminals, per pair.

CE1152



CE1152

METAL STAND

Cast iron stove enamelled base, chrome plated rod, one clamp and one support for holding Hoffman Voltameter.

CE1156



CE1145 + CE1156

FILTER PAPER

Suitable for quantitative work.

	Diam., mm
CF1190/1	90
CF1190/2	110
CF1190/3	125
CF1190/4	150
CF1190/5	185
CF1190/6	215
CF1190/7	240



CF1190

FILTER PAPER

Suitable for school use.

	Diam., mm
CF1210/1	90
CF1210/2	110
CF1210/3	125
CF1210/4	150
CF1210/5	185
CF1210/6	215
CF1210/7	240

FILTER PAPERS IN SHEETS ALSO AVAILABLE



CF1312



CF1324

FILTER PUMP

Glass, ruffled inlet and outlet tubes, length 200 mm,

CF1312

FILTER PUMP

Chrome plated brass, with water inlet nozzle and vacuum nozzle.

CF1324

FILTER PUMP

Polypropylene, with non-return valve and arm for removable hose connection. Suitable for use with corrosive filtrates.

CF1344

FLAME TEST**PLATINUM WIRE**

Platinum wire fused into glass rod, protected in a glass tube.

CF1412

COBALT GLASS

Dark blue glass, size 75 x 50 mm

CF1416

CHARCOAL BLOCK

See CC1401

FLASKS**FLASK, FLAT BOTTOM**

Capacity, ml	Glass	Borosilicate glass
100	CF2001/2	CF2015/2
250	CF2001/3	CF2015/3
500	CF2001/5	CF2015/5
1000	CF2001/7	CF2015/7

FLASK, ROUND BOTTOM

Capacity, ml	Glass	Borosilicate glass
100	CF2101/2	CF2115/2
250	CF2101/3	CF2115/3
500	CF2101/5	CF2115/5
1000	CF2101/7	CF2115/7

FLASK, CONICAL (ERLENMEYER)

Capacity, ml	Glass	Borosilicate glass
50	CF2201/1	CF2205/1
100	CF2201/2	CF2205/2
250	CF2201/3	CF2205/3
500	CF2201/5	CF2205/5
1000	CF2201/7	CF2205/7

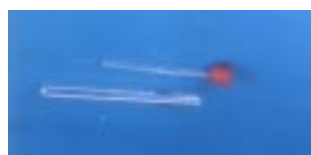
FLASK, CONICAL (ERLENMEYER)

Graduated, Borosilicate glass.

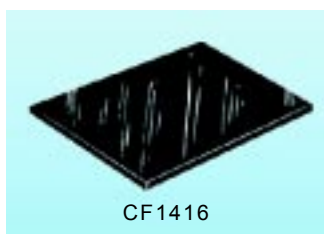
	Capacity, ml	Graduated at ml
CF2210/1	50	25 & 50
CF2210/2	100	50, 75 & 100
CF2210/3	250	100, 150, 200 & 250
CF2210/5	500	200, 300, 400 & 500
CF2210/7	1000	400, 600, 800 & 1000



CF1344



CF1412



CF1416



CF2015



CF2115



CF2205



CF2210

FLASK, DISTILLATION, WITH SIDE TUBE

Borosilicate glass.

	Capacity, ml
CF2251/2	100
CF2251/3	250
CF2251/5	500
CF2251/7	1000

FLASK, FILTER

With tubule at side.

Capacity, ml	Glass Borosilicate glass	
100	CF2311/2	CF2325/2
250	CF2311/3	CF2325/3
500	CF2311/5	CF2325/5
1000	CF2311/7	CF2325/7

FLASK SUPPORT, POLYPROPYLENE

For round bottom flasks upto 10 litres, autoclavable

CF2530

FLASK, VOLUMETRIC, ONE MARK

Glass, with glass stopper.

	Capacity, ml
CF2541/1	50
CF2541/2	100
CF2541/3	250
CF2541/5	500
CF2541/7	1000
CF2541/9	2000

FLASK, VOLUMETRIC, ONE MARK

Borosilicate glass, with interchangeable glass stopper.

Capacity, ml	Class 'B'	Class 'A'
50	CF2551/1	CF2571/1
100	CF2551/2	CF2571/2
250	CF2551/3	CF2571/3
500	CF2551/5	CF2571/5
1000	CF2551/7	CF2571/7
2000	CF2551/9	CF2571/9



CF2251



CF2325



CF2530



CF3013



CF3027

FLASK, VOLUMETRIC, ONE MARK

Borosilicate glass, with polypropylene stopper.

Capacity, ml	Class 'B'	Class 'A'
50	CF2591/1	CF2601/1
100	CF2591/2	CF2601/2
250	CF2591/3	CF2601/3
500	CF2591/5	CF2601/5
1000	CF2591/7	CF2601/7
2000	CF2591/9	CF2601/9

FUNNELS

FILTER FUNNEL, Plain, long stem.

Diam., mm	Glass	Borosilicate glass
50	CF3013/1	CF3024/1
62	CF3013/2	CF3024/2
75	CF3013/3	CF3024/3
100	CF3013/4	CF3024/4
125	CF3013/5	
150	CF3013/6	
200	CF3013/7	

FILTER FUNNEL, POLYTHENE

	Diam., mm
CF3027/1	50
CF3027/2	62
CF3027/3	75
CF3027/4	100
CF3027/5	125
CF3027/6	150
CF3027/7	200



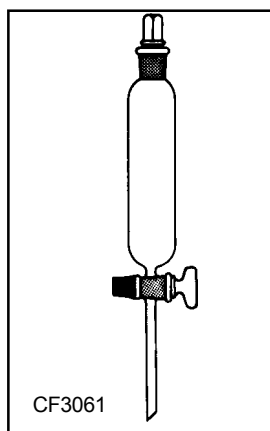
CF2551



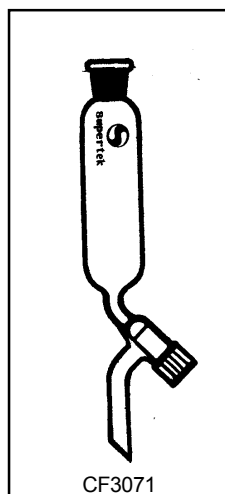
CF2591



CF3031 CF3041



CF3061



CF3071



CF3080



CF3107



CF3124



CF3115



CF3130



CF3154

DROPPING FUNNEL, CYLINDRICAL

Open top, with stopcock.

Capacity, ml	Neutral glass	Borosilicate glass
25	CF3031/1	CF3041/1
50	CF3031/2	CF3041/2
100	CF3031/4	CF3041/4

SEPARATING FUNNEL, CYLINDRICAL

With stopcock and glass stopper.

Capacity, ml	Neutral glass	Borosilicate glass
25	CF3051/1	CF3061/1
50	CF3051/2	CF3061/2
100	CF3051/4	CF3061/4
250	CF3051/6	CF3061/6

SEPARATING FUNNEL, CYLINDRICAL

Borosilicate glass, with rotaflow stopcock and 14/23 ground glass socket on top,

Capacity, ml	
CF3071/2	50
CF3071/4	100

SEPARATING FUNNEL, PEAR SHAPED

With stopcock and glass stopper.

Capacity, ml	Neutral glass	Borosilicate glass
50	CF3080/1	CF3090/1
100	CF3080/3	CF3090/3
250	CF3080/5	CF3090/5
500	CF3080/7	CF3090/7

BUCHNER FUNNEL

Porcelain, straight sides, integral perforated plate, glazed inside and outside.

	Diam., mm
CF3107/1	35
CF3107/2	50
CF3107/4	60
CF3107/5	75
CF3107/6	100
CF3107/7	125
CF3107/9	200

THISTLE FUNNEL,

Neutral glass, stout wall.

	Length, mm
CF3115/1	200
CF3115/3	250
CF3115/5	300

THISTLE FUNNEL, SHORT STEM

Neutral glass, for filling barometer tubes, burette etc.

CF3124**THISTLE FUNNEL, POLYTHENE**

Unbreakable polythene top with 6 mm glass tube

CF3130**THISTLE FUNNEL, SAFETY**

With bend and two safety bulbs, length of stem 300 mm.

CF3154/1	Neutral glass
CF3154/3	Borosilicate glass

FUNNEL STAND

Cork lined wood clamp with plastic screw, base with four feet, rod fitted with plastic socket, one end having threads which fit into the base.

CF3170	for one funnel
CF3172	for two funnels

GAS SYRINGE

Precision ground glass syringe, borosilicate glass, cap. 50 ml., graduated.

CG1009

GAS GENERATOR, KIPP'S

Glass, complete with delivery tube, thistle funnel and rubber corks.

Capacity, ml	Glass	Borosilicate glass
250	CG1110/2	
500	CG1110/4	CG1121/4
1000	CG1110/6	CG1121/6

GAS GENERATOR, KIPP'S

High density polythene, unbreakable, leakproof, detachable for easy cleaning.

Capacity, ml

CG1151/2	250
CG1151/4	500
CG1151/6	1000

GAS JAR

Glass, with foot and ground flange.

Diam., mm Height., mm

CG2111/1	50	150
CG2111/2	50	200
CG2111/3	50	250
CG2111/5	75	200
CG2111/7	75	250
CG2111/9	75	300

GAS JAR COVER

Ground glass, circular, diam. 75 mm.

CG2130

GAS TUBE

Graduated, neutral glass, sealed at one end. Capacity 50 x 0.2 ml.

CG2200

GAS WASHING BOTTLE

Flat bottom flask with stopper and two glass tubes.

Capacity, ml

CG2204/2	250
CG2204/3	500
CG2204/5	1000

GAS WASHING BOTTLE, DRESCHEL'S

Borosilicate glass, inlet and outlet tubes in a stopper which fits the bottle having interchangeable 19/26 ground glass joint.

Capacity, ml

CG2206/1	125
CG2206/2	250



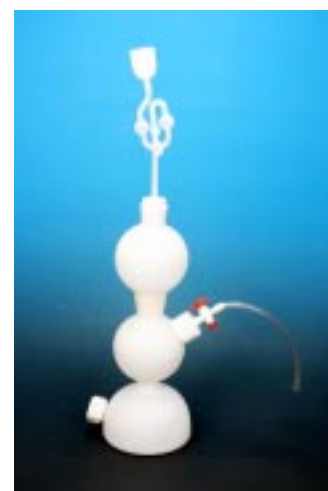
CF3172



CG1009



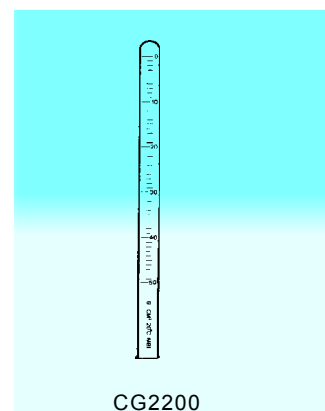
CG1121



CG1151



CG2111, CG2130



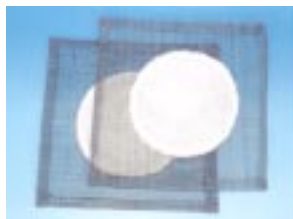
CG2200



CG2204



CG2206



CG2215



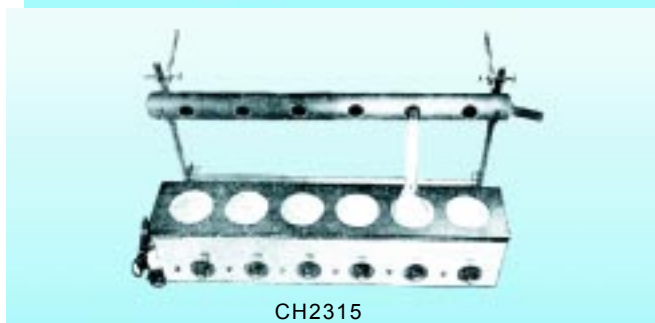
CH2251



CH2290



CH2305



CH2315

GAUZE, IRON

With folded edges.

Size, mm	Asbestos Centre	Ceramic Centre
125 x 125	CG2215/2	CG2225/2
150 x 150	CG2215/5	CG2225/5

HEATING MANTLE

Glass yarn heating net in one piece aluminium body, with mineral wool lagging, for 220-240 V AC, to work upto 350°C.

Capacity ml	Rating W	With off/on switch	With energy regulator
50-100	80	CH2251/1	CH2253/1
250-500	200	CH2251/3	CH2253/3
1000	300	CH2251/5	CH2253/5

HEATING MANTLE, MULTI-SIZE

One mantle can be used for different size flasks.

Capacity ml	Rating W	With off/on switch	With energy regulator
50-250	200	CH2271/1	CH2273/1
100-500	200	CH2271/3	CH2273/3
250-1000	300	CH2271/5	CH2273/5

SOXHLET EXTRACTION HEATING UNIT

Unit comprises a compact box section of mild steel housing. Heating mantles consist of coiled element supported by glass yarn net. These flexible units ensure close contact with flask surface and even distribution of heat. The housing has two vertical and two horizontal rods with clamps to fix glass apparatus. Each heating mantle is provided with an energy regulator and indicator lamp. Without glass parts.

CH2285	Unit of three mantles, 375 watt
CH2290	Unit of six mantles, 750 watt.

GLASS PARTS FOR ABOVE

See CO1105-1120

KJELDAHL DISTILLATION UNIT

Useful for distillation for 300 & 500 ml flasks, provided with tubular stand and brass condenser rack. Each heating mantle is provided with an energy regulator and indicator lamp. with six heating mantles, without glass parts.

CH2305

GLASS PARTS FOR ABOVE

See CO1105-1120

KJELDAHL DIGESTION UNIT

useful for estimation of nitrogen contents of substances by digestion, for 300 and 500 ml flasks. Provided with lead fume duct, mild steel stand and pair of hangers. Each heating mantle has an energy regulator and indicator lamp, without glass parts

CH2315 Unit with six heating mantles

GLASS PARTS FOR ABOVE

See CO1105-1120

**ASK FOR
BIOLOGICAL MODELS
CATALOGUE**

HOT PLATE

Laboratory, round, top diam. 20 cm, approx. 1.5 kW, heats upto 350°C. Provided with indicator lamp and 3-position rotary switch. For 220-240 V.A.C.,

CH2325

HOT PLATE

As above but with energy regulator to vary temperature continuously.

CH2330

HOT PLATE, RECTANGULAR

For temperatures upto 400°C, top size 25x30x15 cm, 1.2kW

CH2335 with tumbler switch.

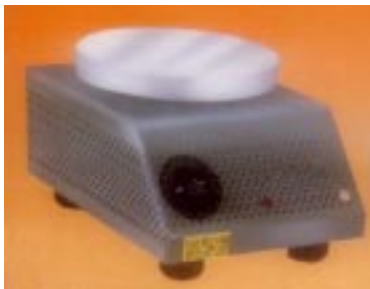
CH2337 with energy regulator for continuous variation of temperature.

CH2340 with thermostat.

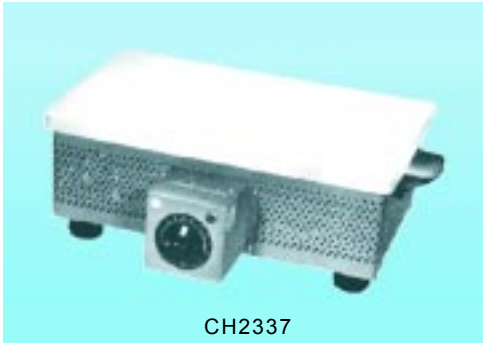
MAGNETIC STIRRERS
PAGE 49



CH2325



CH2330



CH2337

INCUBATOR, UNIVERSAL

Double walled, inner chamber made of thick anodized aluminium or stainless steel and outer of mild steel, The gap of 75 mm between two walls is filled with glass wool for heat insulaton. The door has double viewing to permit observation without opening. Heating elements are placed in ribs at the bottom and at sides. Built-in L-shape horizontal thermometer 0 to 110°C. for uniform heating. Temperature is controlled by a precision thermostat from 5° C above room temperature to 70°C, with sensitivity of ±1°C. Complete with 2 indicator lamps, adjustable perforated shelves. Having arrangement to fit an automatic timer. Works on 220-240 V, 50 Hz. Supplied complete with 1.5 metre of 3-core cable.

Size, inner chamber (mm)	No. of shelves	Aluminium	Stainless steel
300 x 300 x 300	2	CI2120/1	CI2130/1
350 x 350 x 350	2	CI2120/2	CI2130/2
450 x 450 x 450	2	CI2120/3	CI2130/3
450 x 600 x 450	2	CI2120/4	CI2130/4
600 x 600 x 600	2	CI2120/5	CI2130/5
600 x 900 x 450	3	CI2120/6	CI2130/6
600 x 900 x 600	3	CI2120/7	CI2130/7

OPTIONAL ACCESSORIES

Factory fitted, in any of the above sizes.

CI2140/1 Timer

CI2140/3 Circulatory Fan

CI2140/5 Electronic digital temperature indicator.



CI2120

UNIVERSAL OVENS
PAGE 39

JARS

SPECIMEN JAR

Round, with ground flange, knobbed stopper.

Ht. x diam., mm

CJ1002/1	150 x 50
CJ1002/2	200 x 50
CJ1002/4	250 x 50
CJ1002/6	200 x 75
CJ1002/8	250 x 75

SPECIMEN JAR

Rectangular, with cover, but without stopper.

Height x length x width, mm

CJ1004/1	50 x 50 x 30
CJ1004/2	100 x 50 x 60
CJ1004/3	150 x 100 x 50
CJ1004/4	150 x 90 x 60
CJ1004/6	150 x 120 x 90
CJ1004/8	200 x 100 x 50

JAR, COUPLIN

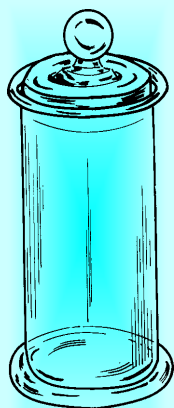
With cover, for 5 slides in vertical position.

CJ1008

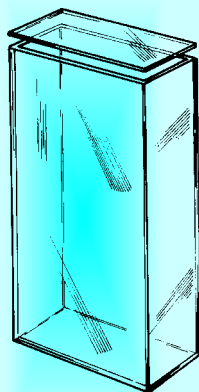
JAR, STAINING, RECTANGULAR

With cover, for 10 slides in horizontal position.

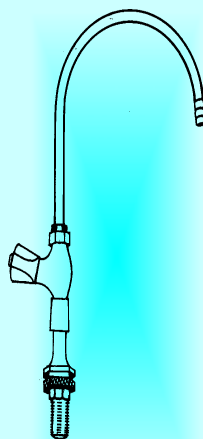
CJ1010



CJ1002



CJ1004



CL1011



CJ1008



CJ1010

LABORATORY FITTINGS

WATER TAP, SWAN NECK

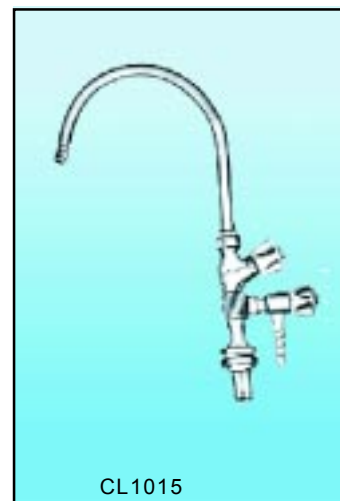
Inlet tail is threaded 1/2 in. BSP, The outlet brass tube is coupled to the tap standard by means of a sleeve nut allowing the neck to swivel or to be locked in any desired direction, leakproof operation, designed for pressures upto 80 p.s.i. finished in hard chrome plating

CL1011/1	Water tap, single
CL1011/3	Water tap, single, heavy
CL1015/1	Water Tap, two way
CL1015/3	Water tap, two way, heavy
CL1018/1	Water tap, three way
CL1018/3	Water tap, three way, heavy

ALL THE ABOVE WATER TAPS ARE AVAILABLE IN BLACK EPOXY COATING AS WELL.

LABORATORY CLAMPS
& BOSS HEAD
PAGE 47-48

BUY  **supertek**
PRODUCTS WITH CONFIDENCE



CL1015

GAS TAPS

Made of selected material, heavy construction, made to ensure leak proof performance. Each piece is tested for pressure. Lever handle is spring loaded and has locking arrangement to ensure that rotation does not go beyond 90°, standard nozzles have 1 mm bore, inlet 1/4 in. BSP, flange diam. 54 mm with three holes to screw on bench or any other surface. Designed to operate pressure upto 2 p.s.i (0.14 Kg/cm²), suitable for coal gas, natural gas or bottled L.P.G., supplied complete with adaptor.

- CL1201** One way gas tap
- CL1202** Two way gas tap
- CL1203** Three way gas tap
- CL1204** Four way gas tap

ACCESSORIES

- CL1221** Adaptor, spare
- CL1223** Nut for joining adaptor to copper tube.
- CL1226** T-joint, flared, forged brass with 3 nuts, size 5/16".

MAT, ASBESTOS

Protects bench tops from damage due to hot objects.

- CM1502/1** 75 x 75 x 3 mm
- CM1502/3** 150 x 150 x 6 mm



CL1202



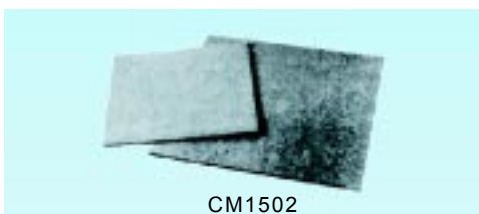
CL1204



CL1223



CL1226



CM1502

MATHEMATICS

DRAWING MATHEMATICAL SET

For students' use, set comprises 1 compass, 1 divider, 1 protractor, 1 set square 60°, 1 set square 45°, 1 plastic ruler 15 cm, 1 eraser and 1 pencil. Complete set in sheet metal box.

CM1602

DRAWING INSTRUMENT SET, ENGINEERS'

Comprising 1 spring bow compass 150 mm, with pen, pencil, divider legs and lengthening bar, 1 hair spring divider 150 mm, one set of three spring bows 75 mm, (pen, pencil & divider), 1 drawing pen with lift-up steel nib, 1 lead case, 1 screw driver, complete in velvet lined case.

CM1604

DRAWING BOARD

Soft wood, clamped edges.

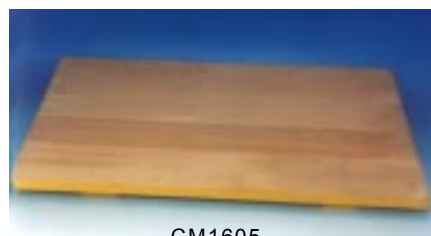
- CM1605/1** 440 x 320 mm
- CM1605/4** 630 x 450 mm



CM1602



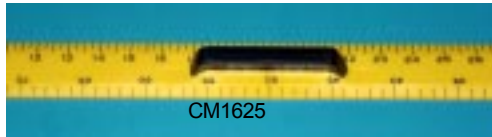
CM1604



CM1605



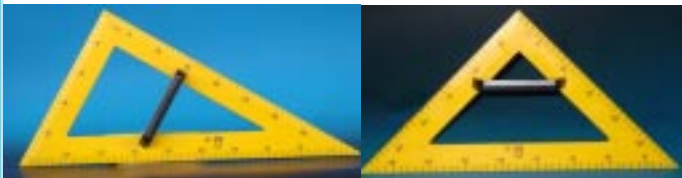
CM1620



CM1625



CM1627



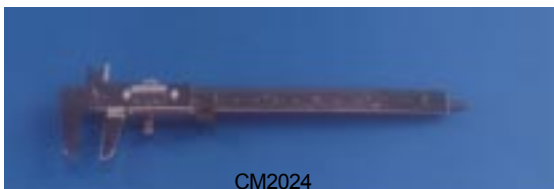
CM1633



CM1635



CM1641



CM2024



CM2027

BLACK BOARD INSTRUMENTS

BLACKBOARD GEOMETRICAL SET

Consists of one each wooden ruler, compass and divider each 300 mm, one pair set squares 45° and 60°, one protractor and one duster, in polished wooden case.

CM1620

RULER

Graduated in cms, width 6 cm, thickness 6 mm approximately, with handle.

Wooden	Plastic	Size, mm
CM1624/1	CM1625/1	200
CM1624/3	CM1625/3	350
CM1624/5	CM1625/5	450

COMPASS

With brass lock screw to hold chalk.

Wooden	Plastic	Size, mm
CM1626/1	CM1627/1	300
CM1626/3	CM1627/3	350
CM1626/5	CM1627/5	450

DIVIDER

Wooden	Plastic	Size, mm
CM1628/1	CM1629/1	300
CM1628/3	CM1629/3	350
CM1628/5	CM1629/5	450

SET SQUARES

Graduated, per pair of 45° and 60°, with handles.

CM1631	Wooden
CM1633	Plastic

PROTRACTOR

Graduated, 0-180°, with handle.

CM1635	Wooden
CM1637	Plastic

DUSTER

With felt, for black boards.

CM1640	Wooden
CM1641	Plastic

MEASURING INSTRUMENTS

VERNIER CALLIPERS

Plated steel. Double scale, reading 0-12 cm x 0.1 mm and 5 x 0.01 inch, with depth gauge, in plastic pouch.

CM2024

VERNIER CALLIPERS

As CM2024, but with thumb wheel for fine adjustment.

CM2027

SHIV DIAL SUD & SONS

23, INDUSTRIAL ESTATE, JAGADHRI ROAD

AMBALA CANTT- 133 006 (INDIA)

☎ : 91 - 171 - 26 995 37 / 26 992 97

FAX : 91 - 171 - 26 6663 7 / 26 991 54

E.MAIL : shivsons@vsnl.com