

E BELL IN BELL JAR

An electric bell 3-6 volts ac/dc suspended in a bell jar, fitted with rubber bung & connector terminals.

P36015



F WIRE HELIX (SLINKY)

To illustrate wave motion. Flat section steel wire in helical coil, Closed length

Diameter

P36021/1	75 mm	50 mm
P36021/3	110 mm	75 mm
P36021/5	165 mm	75 mm



G STEEL SPRING, NARROW

Diam 20 mm., length 3 metres approx. when closed, extending to 10 metres, for transverse wave motion experiments.

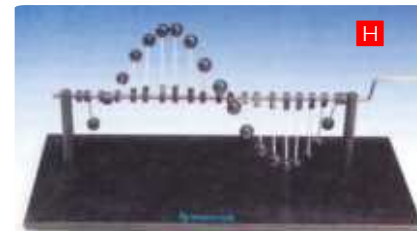
P36032



H WAVE MACHINE, POWELL'S

Consisting of 19 spheres, each mounted on a 75 mm long rod, with a collar for attachment to a shaft. The spheres are mounted at 20° intervals, equally spaced along the shaft. The shaft rotates in two pillars mounted on a base.

P36038



I WAVE MACHINE

Demonstrating longitudinal and transverse waves. A number of eccentric discs move a number of metal rods. Transverse waves are obtained by straight rods and longitudinal waves by bent rods.

P36040



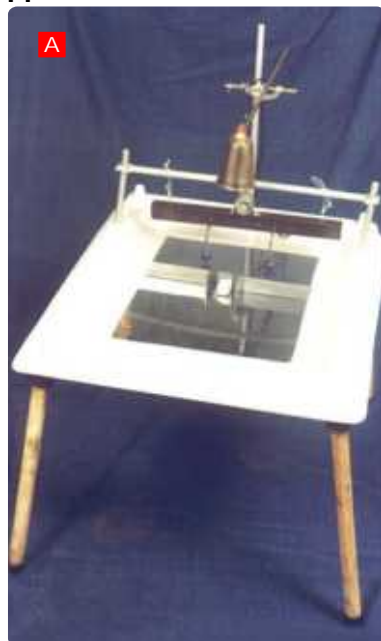
A RIPPLE TANK

Transparent acrylic plastic ripple tank, supported in a sturdy plastic frame which has recesses to hold four legs with levelling feet. The tank edges are shaped to minimise undesired reflections. Tank has a drain hole closed by a rubber stopper.

With two light alloy uprights to carry a horizontal rippler support rod which is adjustable for height. The ripple assembly, elastically suspended from the support rod, consists of a 4-6 V d.c. motor mounted on a wooden beam. The motor has an eccentric weight which causes the beam to oscillate. Two point sources are provided by two plastic spheres, each mounted on a right angled rod. A metal rod is fixed centrally into a socket in one short side of the frame to afford support to the illuminant.

Overall size of the tank 580 x 500 x 80 mm, window area 370 x 280 mm, height of tank above bench level (with legs attached) approx 375 mm. **Complete with following accessories:-**

2 Straight obstacles of aluminium alloy length 130mm; 1 Straight obstacle length 40mm; 1 curved reflector radius 200 mm.; 1 trapezoidal plastic plate for refraction; 1 wood hand wave roller; 1 water dropper; 1 pkt rubber bands; 1 foam plastic sponge; one illuminant with a 12 V, 24 W lamp mounted in a lamphouse and provided with a long supporting rod which can be attached to a retort stand, with instructions.

P36044**B POWER SUPPLY UNIT**

For use with ripple tank, to operate both the rippler motor and the illuminant. Output 12 V a.c. max 24 W for illuminant and 0 to 6 V d.c. variable for rippler motor. Operates from 240 V a.c. mains.

P36062.**C HAND STROBOSCOPE**

For use with ripple tank, simple form. A disc of 250 mm diam. with 12 equispaced slots and a finger hole, rotating on its axis, with handle.

P36066**D SONOMETER, 3-WIRE**

Hollow wooden sounding box 1290 x 130 x 110 mm, with mm scale, has two fixed bridges 72 cm apart over which wires are stretched. To one wire is fitted a spring balance reading to 100N x 5N and its tension can be adjusted by a winged nut and measured. Another wire passes over a pulley and can be loaded as desired. A third wire, for comparison, can have its tension adjusted by a wrest-pin. With 3 movable bridges, wrest-pin key, spring balance, and set of four wires of different diameters, each 1.5 metre long, without masses.

P36105

E SONOMETER, TWO WIRE

1200 x 115 x 60 mm hollow box with two fixed bridges with a one metre scale in between, and with a pulley and wrest-pin for wires, complete with a long movable bridge, wrest-pin key and two each brass and steel wires, each of 1.5m length, without masses.

P36108**F SONOMETER, SIMPLE**

Wooden baseboard 690 x 90 mm on four feet. At one end are two 50 N spring balances with hooks and at the other are two wrest-pins. With one large and two small bridges, wrest-pin key and 2 steel wires, each 1 metre long ,without masses.

P36112**TUNING FORK**

Superior quality steel, chrome plated or epoxy coated,

	Frequency, Hz	Note
P36120/1	256	C1
P36120/2	288	D
P36120/3	320	E
P36120/4	341	F
P36120/5	384	G
P36120/6	426	A
P36120/7	480	B
P36120/8	512	C2

**G TUNING FORKS, SET OF 8**

Superior quality steel, frequency 256 to 512 Hz, set of 8 ,in case

P36122 Chrome plated**P36124** Epoxy coated**H TUNING FORKS, SET OF 13**

Superior quality steel,,chromatic scale, frequency 256 to 512, in case.

P36129 Chrome plated**P36132** Epoxy coated**I TUNING FORKS, SET OF 4**

Threaded shanks, mounted on a common resonance box and having frequencies of C1(256), E(320), G(384), C2(512), Hz. Size of box 285 x 115 x 63 mm. approx., complete with hammer.

P36133**J TUNING FORKS, SET OF 2**

The forks have threaded shanks and will screw in the box tops. Frequency of each is A(426) .One fork is fitted with a sliding mass to alter its frequency.

On sounding both forks, a clear 'beat' is produced. Supplied with one hammer. Size of box 180 x 88 x 53 mm. approx.

P36137

A TUNING FORK, ELECTRICALLY MAINTAINED

On sturdy base, can be used in horizontal or vertical position. Prong size is 300 x 25 x 10 mm. Actuated by an electromagnet between the prongs, works with 6 V d.c. Amplitude of vibration can be varied by adjusting the position of the electromagnet.

P36145**B MELDE'S APPARATUS**

Improved type, to show effects of vibrations in a stretched cord & to investigate relation between frequency, tension & density. Comprising an adjustable length of thin steel rod mounted in a pair of socket terminals near one end and passing through an a.c. energising coil and a permanent magnet. The other end of the wire has a small boss with clamping screw for attaching to cord. Two adjustable contacts are also fixed on either side of the armature connected to terminal sockets to provide a quick change-over switch in capacitor charge/discharge experiments etc.

P36148**C WHIRLING TABLE**

For use in either vertical or horizontal position, with driving wheel and driving belt. Overall height 485 mm.

P36160**D SAVART'S TOOTHED WHEELS**

Set of four toothed wheels, 75 mm diam on a common spindle, having 40, 50, 60 & 80 teeth respectively.

P36164**E SAVART'S TOOTHED WHEELS**

As above, with stand

P36165**F SEEBECK'S SIREN**

A 300 mm metal disc with eight concentric rings of 48, 45, 40, 36, 32, 30, 27 & 24 holes respectively.

P36167

G ORGAN PIPE

Simple open form, polished wood, air column 40 cm. Size 520 x 50 x 50 mm
P36173



H ORGAN PIPE

As above, but with graduated sliding rod, overall length 540 mm when closed.
P36175



I RESONANCE APPARATUS, SIMPLE FORM

For measuring the resonant length of an air column driven by a tuning fork. Comprises a brass tube 292x27 mm diameter fixed to a base with a sliding inner tube 305 mm long which allows the length of the air column to be varied from 350 to 530 mm.
P36178



J RESONANCE APPARATUS

Glass tube of approx. 840 x 25 mm size mounted on a retort stand with clamp and boss is connected by rubber tubing to a 500 ml glass bulb supported on rubber covered split iron ring, with a spring clip for rubber tubing.
P36185



K RESONANCE APPARATUS

Consists of a chrome plated brass resonance tube 100 cm long, brass reservoir 250 ml and a metre scale mounted on a metallic stand. With rubber tubing.
P36187



L MICROPHONE

General purpose piezzo-electric crystal microphone, frequency response 60 to 10,000 Hz. Complete with 1.4 m screened lead, terminals and jack plug.
P36190



M LOUD SPEAKER

4 ohm moving coil speaker, mounted in sheet metal frame for vertical or horizontal position, with two 4 mm sockets.
P36195

