



HUMAN ANATOMICAL MODELS

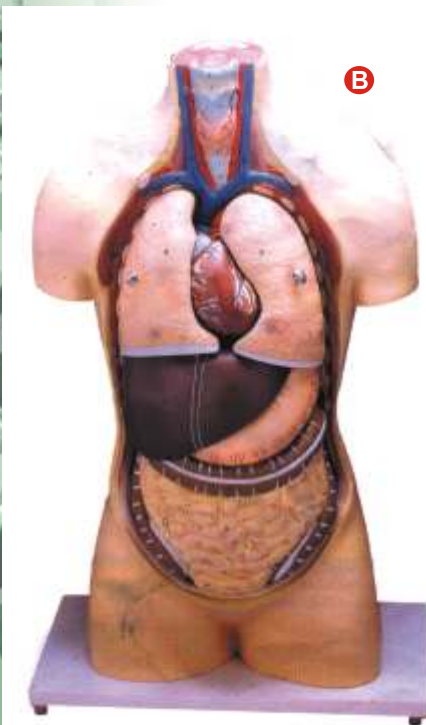
- *Made of unbreakable materials, robust construction, with fast natural colours.*
- *Details are accurately exhibited.*
- *Parts are easily removable to facilitate teaching.*

TORSOS

HUMAN TORSO WITH HEAD **A**

Full size, 10 parts, without sterno - abdominal wall but with ribs, sternum and clavicle with their attachments. Thoracic and abdominal organs, individually detachable lungs, stomach, liver, intestine, heart, which is further sectioned in two parts. Half of skull cap is removed, and brain can be taken out, exposing the interior of the skull. Sectioned head and neck depicts internal organs of the region, sexless, on base, with key card.

B12010



HUMAN TORSO WITH HEAD

B12012 As above, but in 7 parts

HUMAN TORSO WITHOUT HEAD **B**

Full size, 8 parts, shows all the major anatomical details. Visceral organs are individually detachable to expose the body cavity. Lungs, heart, liver, stomach and intestine are removable. Heart, lung, and kidney are sectioned to show internal details, sexless, on base, with key card.

B12015

HUMAN TORSO WITH INTERCHANGEABLE SEX ORGANS **C**

Similar to B12010 but with interchangeable male/female sex organs, dissectable in 14 parts, on base, with key card

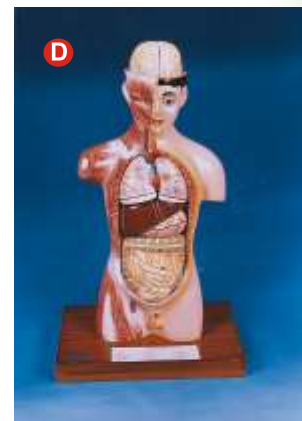
B12020



HUMAN TORSO, WITH HEAD, HALF SIZE **D**

Youth model, approx.600 mm. in height, dissectable into 6 parts. The brain is fixed in skull and can be seen after removing the skull cap. Lungs, liver, stomach and intestine are removable to show the internal structure. On base, with key card.

B12022



HUMAN TORSO, WITHOUT HEAD, HALF SIZE **E**

Similar to cat no B12022 but without head. Dissectable into 6 parts, on base, with key card.

B12024



HUMAN HEAD AND BRAIN, LIFE SIZE **F**

The brain is dissectable in 2 parts, can be taken out, showing the cranial nerves and important parts of the skull, on base, with key card

B12028





HUMAN HEAD AND NECK L. S. A

Natural size, shows sectional view of head, brain, nose, mouth, pharynx, larynx and vertebral column of the neck, on base, with key card

B12032



HUMAN BRAIN, 4 PART B

A life size detailed 4 part sectioned model, The right hemisphere has the cerebellum and the stem with occipital lobe. On base, with key card.

B12035



HUMAN BRAIN, 2 PART C

A life size 2 part sectioned model of human brain, clearly showing all important parts, on removable base, with key card.

B12038



HUMAN NOSE, L. S. D

Enlarged 2 times, demonstrating clearly crossing of the windpipe and esophagus, on board, with key card.

B12040

HUMAN EYE

HUMAN EYE, 5 TIMES ENLARGED **E**

An highly improved and enlarged model showing fine details in three dimensional relief. Cut in horizontal plane and separable in seven parts. After removing the upper half of the sclera (outer shell), the choroid with its verticose veins is exposed; with the removal of second shell, details of the retina come into view and the position of the yellow and blind spots is quite visible. All important anatomical features such as muscle insertions, optic nerve, blood vessels, ciliary body, cornea, crystalline lens, and iris etc are clearly numbered and are identifiable. Mounted on base, with key card.

B12050



HUMAN EYE, 3 TIMES ENLARGED **F**

7-part model. The upper half of the sclera with cornea and eye muscle attachments, both halves of choroid with iris and retina, lens and vitreous humour are removable, mounted on stand, with key card.

B12054



HUMAN EYE WITH LID **G**

Similar to cat. no B12054 but with lid.

B12056

HUMAN EYE IN BONY ORBIT **H**

A 3 times enlarged model of the eye, with 9 parts, in bony orbit. The upper half of eye ball is removable and dissects into 7 parts, showing all anatomical details. Out of six muscles controlling the eye ball two are removable. On base, with key card.

B12058



EYE MODEL ON BONY BASE **I**

A 5 times enlarged model of the eye, sectioned horizontally, dissects into 7 parts, the upper half of the sclerotic membrane, two choroid membranes, retina with vitreous humour, lens and lower half of the sclerotic membrane. On base, with key card.

B12060





HUMAN EAR

HUMAN EAR, ENLARGED, 2 PARTS **A**

Enlarged 4 to 5 times, Shows outer, middle and inner ear. Removable auditory ossicles and labyrinth with cochlea and vestibulocochlear nerve. On base with key card.

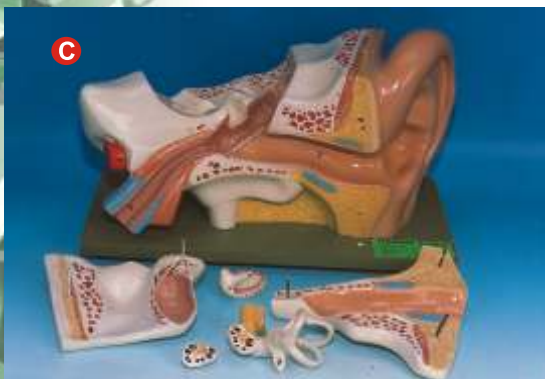
B12070



HUMAN EAR, 3 PARTS **B**

Two times enlarged, dissects into 3 parts, showing external, middle and internal portions. Ossicles and labyrinth can be taken out. On base, with key card.

B12072



HUMAN EAR, 6 PARTS **C**

Four times enlarged, dissectable into 6 parts. Shows outer, middle and inner ear. Removable tympanic membrane with malleus and incus as well as labyrinth with stapes, cochlea and vestibulocochlear nerve (2 part), with two removable bone sections to close the middle and inner ear. On board, with key card

B12075

HUMAN TOOTH

HUMAN TOOTH, MOLAR **D**

Molar tooth dissects into 2 parts, showing internal structure, on stand, with key card.

B12080



HUMAN TOOTH, UPPER TRIPLE ROOT **E**

Upper triple root molar with caries, enlarged 15 times in 2 parts, longitudinal section through crown, 2 roots and pulp cavity, on stand with key card.

B12083



HUMAN TOOTH, UPPER TRIPLE ROOT **F**

As B12083 but dissectable in six parts. With removable pulp and three tooth inserts with different stages of advanced caries, on stand, with key card

B12085



DENTAL CARE MODEL **G**

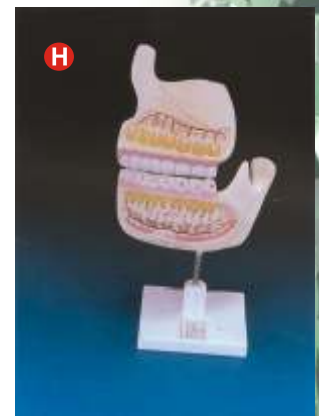
An enlarged model to demonstrate dental care with normal size brush, on base with key card.

B12088

HUMAN UPPER AND LOWER JAW **H**

3 times enlarged, to show the tooth roots, spongiosa, vessels and nerves, on stand, with key card

B12090

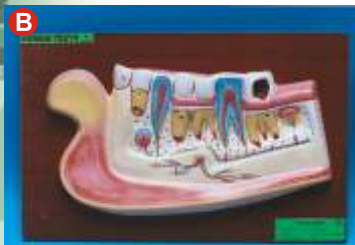




HUMAN UPPER AND LOWER JAW (A)

Showing various positions of teeth in the upper and lower jaws. Internal wall is removed to show the incisors, permanent canine and permanent premolars, molars, permanent incisors in full view and also the arteries, veins and nerves serving them, on base with key card.

B12092



HUMAN LOWER JAW WITH TEETH (B)

Greatly enlarged, internal wall is removed to show the incisors, molars, permanent canine and permanent premolars in full view, as also the arteries, veins and nerves serving them, on a large size board, with key card.

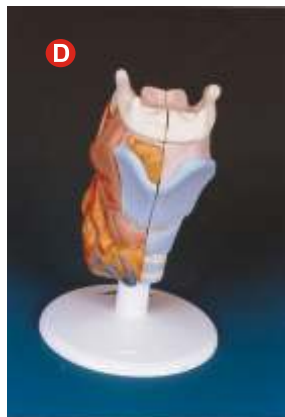
B12094



HUMAN TEETH WITH TONGUE (C)

Enlarged model, dissectable in 2 parts, with detachable teeth of lower jaw, on base, with key card.

B12096



LARYNX, 2 PARTS (D)

Natural size, 2 parts, shows larynx, wind pipe, ligaments, muscles and thyroid gland, one half is removable, on base, with key card.

B12102



LARYNX, 3 PARTS (E)

Similar to cat. no. B12102 but dissectable into 3 parts.

B12104

MODELS

BIOLOGY

HUMAN LARYNX WITH TONGUE **F**

Natural size, three parts.

Larynx showing cartilages, ligaments, muscles, relief of mucous membrane and thyroid gland.

Tongue showing front part of the lower jaw which is detachable and separates into two parts, median section, sublingual gland and sub mandibular gland are shown, on base, with key card

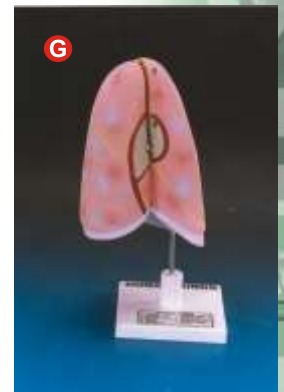
B12106



HUMAN LUNG, RIGHT **G**

Dissectable into 2 parts showing all the important details, on base, with key card

B12110



HUMAN HEART AND LUNGS **H**

Full size, 7 parts, shows 2 part removable larynx, wind pipe with bronchial tree; 2 part removable heart, subclavial artery and vein, venacava, aorta, pulmonary artery, esophagus, 2 lungs with removable front halves and diaphragm, on base, with key card.

B12112



HUMAN HEART WITH LUNGS & LARYNX **I**

An enlarged model, showing detailed structure, mounted on base, with key card.

B12115





HUMAN HEART

HUMAN HEART EXTRA LARGE **A**

Extra large size and highly detailed model carefully coloured and finished. The heart is cut into 2 parts by a vertical line towards the level of the ventricular septum and separates into 2 parts after the arch of aorta and superior venacava have been removed. Both auricles and ventricles with the bicuspid and tricuspid semilunar valves as well as the sigmoid valves can be seen. Separates in 4 parts. On base with diaphragm and outline of the pericardium, with key card

B12120



HUMAN HEART **B**

3 times enlarged, dissectable into 4 parts, showing clearly both ventricles and atria open to expose the valves. The chief blood vessels and musculature of heart are shown, on base, with key card.

B12122



HUMAN HEART **C**

Three times enlarged, dissectable into 3 parts, sectioned through the ventricles and auricles. The bicuspid and tricuspid semilunar and sigmoid valves are shown, on stand with key card.

B12124



HUMAN HEART **D**

Three times enlarged, dissectable in two parts, on stand

B12126



HUMAN YOUTH HEART **E**

Natural size, the front heart wall is removable to view the chambers, on stand, with key card.

B12130

HUMAN STOMACH **F**

Large size, showing external details, mounted on stand, with key card.

B12135

HUMAN STOMACH

2 parts, shows stomach with cardiac portion, mucosa of stomach and vessels. The front stomach is removable to observe the interior view.

B12137

HUMAN STOMACH **G**

Three parts, the front half is removable to show the interior. The model shows layers of the stomach wall, the lower part of the esophagus near the cardiac portion of stomach, with duodenum and pancreas, on removable stand, with key card.

B12138

HUMAN LIVER WITH GALL BLADDER **H**

Natural size, showing the four lobes of the liver, peritoneum, gall bladder and vessels, on stand, with key card.

B12145

HUMAN SKIN **I**

Enlarged 70 times, sectioned three layers of the hair covered skin of the head, showing hair follicles, with sebaceous sweat glands, receptors, nerves, and vessels, on base, with key card.

B12150

HUMAN CIRCULATORY SYSTEM **J**

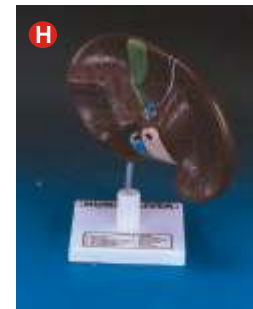
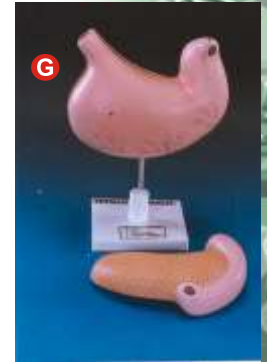
Illustrating the complete blood circulation in veins and arteries, mounted on board, with key card

B12155

HUMAN CIRCULATORY SYSTEM

Similar to cat. no. B12155 but small size.

B12157





HUMAN DIGESTIVE SYSTEM **A**

Showing all important digestive organs in detail, viz. representation of nose, mouth cavity, pharynx, esophagus gastro - intestinal tract, liver with gall bladder, pancreas and spleen. Duodenum, cecum and rectum are opened. Removable transverse colon, mounted on board, with key card.

B12160



HUMAN DIGESTIVE SYSTEM

Similar to cat. no. B12160 but small size.

B12162



INTESTINAL VILLI **B**

100 times enlarged model with one entire villus, one longitudinally sectioned villus showing the arterioles and venules and one cut villus to show the lymphatic vessels, with enlarged representation of a longitudinal section of Lieberkuhn's crypt.

B12165

HUMAN RESPIRATORY SYSTEM **C**

Showing clearly all the important parts, mounted on board, complete with key card..

B12170



HUMAN RESPIRATORY SYSTEM

Similar to cat. no. B12170 but small size.

B12172

NEURON **D**

Enlarged approx 2500 times, showing structure with separate modulated nerve fibre as seen under electron microscope, on board, with key card.

B12175



HUMAN SPINAL CORD **E**

With nerve branches, 10 times enlarged, on base, with key card

B12180

HUMAN NERVOUS SYSTEM **F**

Showing brain and details of spinal cord and the nerves in their natural position in the body, mounted on board, with key card.

B12185

HUMAN NERVOUS SYSTEM

Similar to cat. no. B12185 but small size.

B12187

HUMAN KIDNEY L. S. **G**

3 times enlarged, shows renal corpuscles, tubules, medulla, calyx system and pelvis as well as blood vessels and upper portion of ureter. On board, with key card

B12190

HUMAN KIDNEY WITH ADRENAL GLAND **H**

Dissectable into 2 parts, shows kidney with adrenal gland, renal and adrenal vessels and upper portion of ureter. Front half of the kidney is removable to show cortex medulla and vessels as well as renal pelvis, on stand, with key card.

B12192

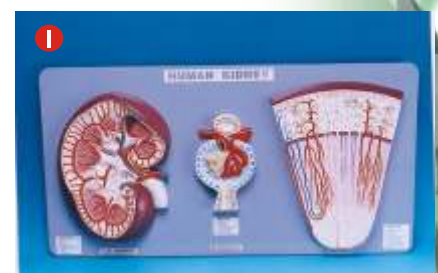
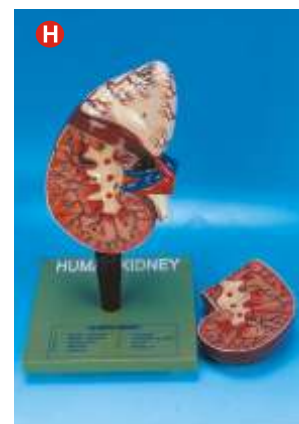
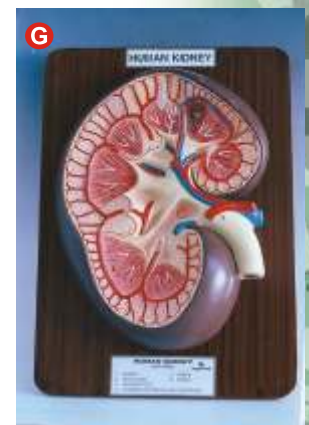
KIDNEY SECTION, NEPHRONS, BLOOD VESSELS AND RENAL CORPUSCLE **I**

Set of three models on one board

Kidney section, 3 times full size. Nephrons and blood vessels 120 times full size showing a section through renal cortex and medulla.

Malpighian corpuscle of kidney, 700 times enlarged showing an opened Malpighian corpuscle with glomerules and Bowman's capsule. On base, with key card.

B12195





HUMAN URINARY ORGANS

KIDNEY WITH BLADDER **A**

Natural size kidney, ureters, adrenal glands and bladder with prostate as well as the large abdominal right kidney sectioned to show all anatomical details. mounted on base.

B12198



HUMAN URINARY ORGANS **B**

Natural size, dissectable into 3 parts, shows kidneys, ureters, adrenal glands, bladder with prostate and major blood vessels. Right kidney sectioned and bladder prostate are removable, on base, with key card.

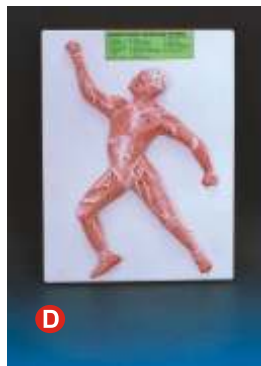
B12200



AIDS VIRUS **C**

HIV virus model is enlarged millions of times, shows the outer lipid membrane with protein structures and the internal nucleus which contains the viral hereditary matter [RNA]. The nucleus is removable and condoms can be put underneath to provide a message regarding measures to be taken for protecting against HIV infections. Supplied without condoms, on stand, with key card.

B12210



MUSCLE FIGURE **D**

About 1/10th natural size, showing the topography of muscles, in one piece, on base with key card.

B12215



HUMAN FEMALE PELVIS, 2 PART **E**

Median section. One half of female genital organs with bladder and rectum is removable, the other half is shown at normal position in the female pelvis. On board, with key card

B12310

MODELS

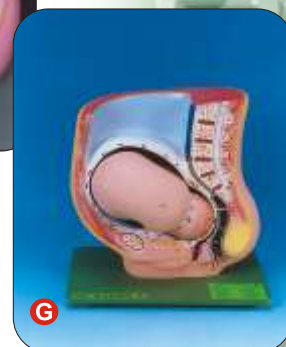
HUMAN MALE PELVIS **F**

Median section. One half of male genital organs with bladder and rectum is removable, the other half is shown at the normal position in the male pelvis. On board, with key card B12312



PREGNANCY PELVIS WITH BABY **G**

Showing a median section through female pelvis in 9th month of pregnancy with a removable foetus to study normal position of child before birth. On base, with key card B12315

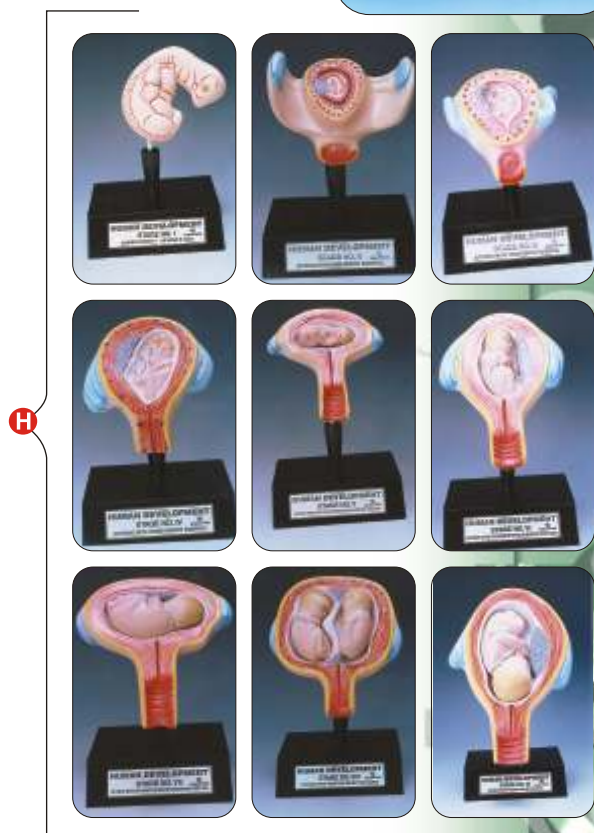


EMBRYONIC DEVELOPMENT **H** (PERIOD OF GESTATION)

A set of nine detailed models, mounted on stands, showing the following stages :

1. An embryo about 6 days old, considerably enlarged.
 2. Uterus with the embryo in 1st month of gestation.
 3. Uterus with the embryo in 3rd month of gestation.
 4. Uterus with foetus in 4th month.
 5. Uterus with foetus, placenta and umbilic cord.
 6. Uterus with foetus in 5th month.
 7. Uterus with foetus in 7th month of pregnancy.
 8. Uterus with foetus in 8th month of pregnancy.
 9. Uterus with foetus in 9th month of pregnancy.
- complete with key cards.

B12320



HUMAN SKULL **I**

2 part model, basic version for demonstration in schools B12402





HUMAN SKULL **A**

3 parts model, for anatomical study

B12405



HUMAN SKELETON **B**

Full size model, as original, articulated but without stand.

B12410



HUMAN SKELETON

Full size model, with skull dissectable in three parts, articulated

B12412



STAND FOR HUMAN SKELETON **C**

Stand for above, base fitted with castor wheels.

B12415

SKELETON MODEL, MINIATURE **D**

A miniature model for schools to give a general idea of the bones, mounted on stand, height 325 mm. approx.

B12420

ZOOLOGICAL MODELS

AMOEBA PROTEUS **E**

Model showing detailed structure, mounted on base, with key card.

B12610



AMOEBA PROTEUS 2 PARTS **F**

Enlarged approx. 1000 times. A small pseudopodium which can be opened up showing the structure as under electron microscope magnification. Separates into 2 parts, on base with key card.

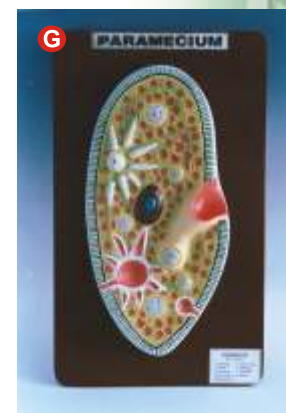
B12612



PARAMECIUM **G**

One side of the model clearly shows the oral groove and their continuation into the gullet and the other side shows the details of the internal structure, mounted on base, with key card.

B12614



PARAMECIUM 2 PARTS **H**

Enlarged approx. 1600 times, shows the cell inventory of protozoa : macro and micronucleus, contractile vacuoles, cytostome with membranellae, myonemes and food vacuoles, formation of the endoplasm and actoplasm & the network of neuronemes. A detailed block shows the structure of the pellicle of the ectoplasm, and the position and order of the trichocysts and a range of cilia in typical order. Separates into 2 parts, on stand and base, with key card

B12616





MODEL OF HYDRA **A**

A longitudinal section showing detailed structure of the body wall, nematocysts, hypostome, mouth, tentacles and gastro vascular cavity. Also showing the testis, ovary and a portion of tentacle in T. S. An accurate and three dimensional model mounted on stand, with key card.

B12620



TAENIA SOLIUM SCOLEX

A single model showing the enlarged scolex mounted on base, with key card.

B12622



COCKROACH ANATOMY **B**

A set of two models, one dissectable into two parts, showing the anatomy of cockroach, alimentary canal regions, salivary glands, reproductive organs, nervous system etc. The other model shows the ventral structure with detachable mouth parts, wings and appendages, with key card.

B12626



INSECT LIFE HISTORY

A set of ten models showing the L.H. of any one of the following insects, mounted on board, with key card.

- B12632 **C**** Anopheles mosquito
- B12634** Culex mosquito
- B12636 **D**** Housefly
- B12638 **E**** Honeybee
- B12640** Butterfly
- B12642** Silkworm



MALARIAL PARASITE LIFE HISTORY **F**

Showing the complete rhizogonus and sporogonus cycle in plasmodium vivax. A set of 24 models, mounted on board, with key card.

B12648



ANATOMY OF STARFISH **G**

Showing the general structure, internal viscera, water vascular system and arm in T.S. showing details of tube feet, mounted on board, with key card.

B12650



FISH DISSECTION **H**

Showing the general structure after dissection, mounted on stand, with key card.

B12652



FROG DISSECTION **I**

Showing section of frog and detailed internal structure of a frog. A large model on board, with key card.

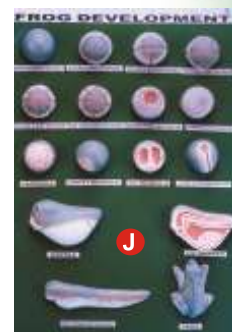
B12654



FROG DEVELOPMENT **J**

A set of 16 models showing the various stages of the development of frog, from egg to adult, arranged on a large size board, with key card.

B12656





EARTHWORM DISSECTION **A**

Showing the external character in a portion and the dissection in the remaining, exhibiting all important systems, mounted on board.

B12658



BIRD DISSECTION **B**

Natural size, domestic hen, the right side shows the feathers and the other side all the internal organs, on base with key card.

B12660



DEVELOPMENT OF CHICK **C**

Clearly showing the order and rate of formation of embryonic tissues and organs. It also brings out the close relations of the birds to the reptiles in mode of development and general construction. Complete development from egg to adult, set of 18, mounted on a large size board, with key card.

B12668



RAT DISSECTION

Dissection of the domestic rat showing the internal viscera, chief systems, alimentary canal and its various parts, with glands, circulatory, respiratory, excretory and the female genital organs. The head is longitudinally cut to show the brain, buccal and nasal cavities, mounted on board, with key card.

B12672

ANIMAL CELL TYPICAL **D**

A three dimensional model with one side dissected to show complete internal structures, mounted on base, with key card.

B12674

ANIMAL CELL DIVISION, MITOSIS **E**

A set of 6 models, showing the process of mitotic cell division. The chromosomes are painted for easy identification.

B12676



ANIMAL CELL DIVISION, MITOSIS **F**

A set of 10 models, showing resting cell, early prophase, prophase, late prophase, metaphase, late metaphase, anaphase, late anaphase, telophase and daughter cells, all mounted on board, with key card.

B12680



ANIMAL CELL DIVISION, MEIOSIS

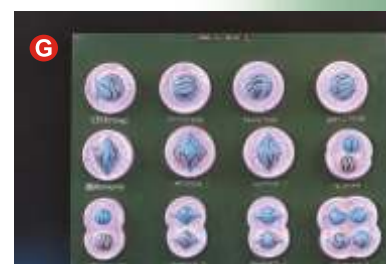
A set of 6 models, showing the process of meiotic cell division.

B12681

ANIMAL CELL DIVISION, MEIOSIS **G**

A set of 12 models, showing detailed stages in meiotic cell division, realistically coloured to bring out the detailed structures as seen under a microscope. A very useful and instructive model, mounted on board, with key card.

B12682



MODEL OF D.N.A. **H**

(Deoxyribonucleic acid) Model showing segment of D.N.A. molecule mechanism of replication, to show the double helix coiling and reforming, nucleotides and the structural formula to show the molecular shapes and bonds and angles distorted. Complete model arranged on a board, fully labelled.

B12688



MODEL OF R.N.A. **I**

(Ribonucleic acid) Model showing R.N.A. molecule, D.N.A. Template molecule of chromosome, role of messenger and transfer R.N.A. colour key and structural formula. The complete model arranged on board, fully labelled.

B12690





BOTANICAL MODELS

TYPICAL FLOWER **A**

Large size model of a typical flower, all parts detachable, ovary with a single ovule inside, on base, with key card.
B12810



TYPICAL FLOWER L.S. **B**

A model showing the L.S. of a flower, mounted on board, with key card.
B12812



PLANT CELL **C**

Enlarged many times, showing the microscopic structure, with key card.
B12815



TYPICAL PLANT CELL **D**

A highly enlarged model, as seen under electron microscope, a portion of wall is removed to show ectoplast, endoplast, tonoplast, vacuoles, nuclear structure, plastids, mitochondria etc., mounted on base, with key card.
B12820

CHLYMODONUS

A complete set showing internal structure. Zoospore formation and stage in sexual reproduction. An accurately designed model, mounted on a board, with key card.

B12824

SPIROGYRA CEL E

A detailed instructive model mounted on board, with key card.

B12826



PLANT MITOSIS F

A set of 10 models showing all the stages of karyokinesis and cytokinesis from metabolic cell to the formation of two daughter nuclei. All stages are mounted on a board, with key card.

B12830



PLANT MITOSIS

A simplified and smaller set of 6 models.

B12832

PLANT CELL DIVISION MEIOSIS G

set of 15 newly designed models according to the recent concept of chromosome changes from the resting nucleus to the formation of 4 daughter cells, complete set mounted on board

B12835

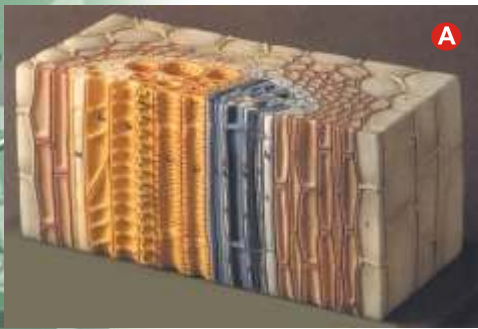


PLANT CELL DIVISION MEIOSIS H

A simplified and smaller set of 6 models.

B12842





OPEN COLLATERAL CONDUCTING BUNDLE OF A DICOTYLE **A**

Plane enlarged approx. 550 times. in one piece, on base, with key card.

B12846



FERTILISATION OF ANGIOSPERMS **B**

Polygynous type, enlarged 300 times, on board with key card,

B12848



ROOT ANATOMY **C**

This model demonstrates the general arrangement of tissues. Stem is cut transversely, longitudinally, radially and tangentially at different planes to make the structural details very clear and the formation of various tissues easily understandable, mounted on stand, with key card.

B12850



MONOCOT ROOT T.S. **D**

Showing complete internal details of the root of smilax, mounted on board, with key card.

B12856



DICOT ROOT T.S. **E**

Showing complete internal anatomy of the young dicotyledonous root, mounted on board, with key card.

B12858

ROOT TIP OF FERN **F**

The model shows the pointed growth resulting from an apical cell with the cells which branch out spirally from point of vegetation. Root shown in longitudinal and transverse sections, detachable, with crown of the root removable.

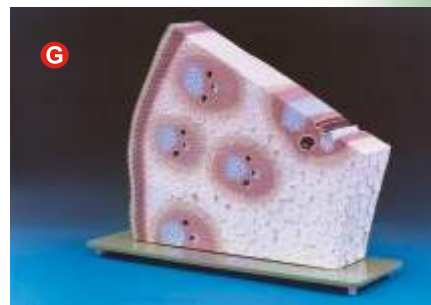
B12860



MONOCOT STEM ANATOMY T.S & L.S **G**

This model exhibits the various tissues and the scattered, closed and collateral vascular bundles in transverse and longitudinal sections in maize. The large pitted vessels, spiral and annular vessels show the cell wall thickenings in L.S. Useful model for teaching anatomy of monocot stem. Mounted on base, with keycard.

B12862



DICOT STEM ANATOMY T. S. & L. S. **H**

This model shows the transverse and longitudinal section of a dicotyledonous stem in which case the cambium ring has been formed but no secondary growth has yet taken place. Useful model for study of epidermis, lenticle, cork layer, cork cambium, cortical parenchyme, starch sheath, medullary rays, phloem, sieve plate, sieve tube, phloem parenchyma and inter fascicular cambium. xylem, pitted vessels, bordered pitted vessels, annular vessels, spiral vessels, pith etc. Mounted on base, with key card.

B12864

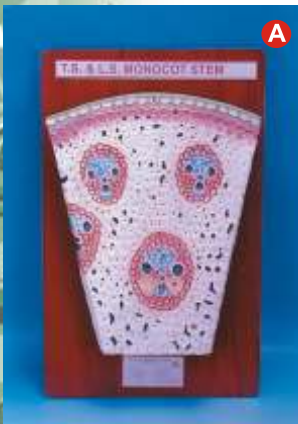


DICOT STEM T. S. **I**

Showing various tissues, vascular bundles in transverse section of a dicot stem of sunflower, on board

B12867





MONOCOT STEM T. S. **A**

Showing various tissues, vascular bundles in transverse section of a monocot stem of maize, on board, with key card

B12872



DICOT PLANT STEM

Cross section of the tissue structure of a garden bean's dicot stem (phaseolus vulgaris), magnified 250 times.

B12875



LEAF ANATOMY **B**

3-dimensional model of leaf showing detailed structure of transverse section and longitudinal section. A large size model on stand, with key card.

B12880

ISOBILATERAL LEAF **C**

Showing the details of transverse section of leaf, mounted on board, with key card.

B12885



MONOCOT LEAF T.S. **D**

Showing details of internal structure of a typical monocot leaf, mounted on board, with key card.

B12888

DICOT LEAF T.S.

Showing details of typical mesophytic leaf, mounted on board, with key card.

B12890



GERMINATION OF DICOT AND MONOCOT SEED

Any of the common type of seeds, set of seven models, small size, mounted on board, with key card.

B12895

*New Models
can be developed
as per your specifications*

Kindly Contact :

SHIV DIAL SUD & SONS

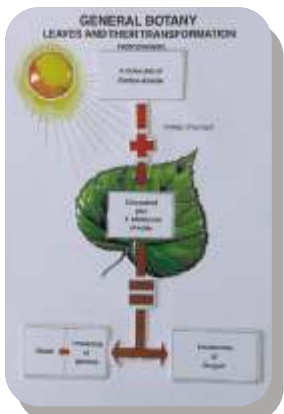
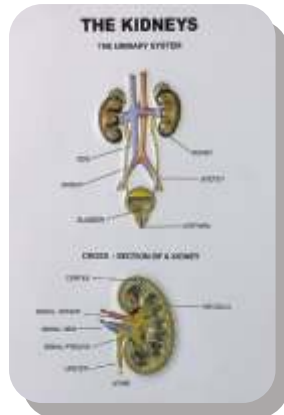
23, Industrial Estate, Ambala Cantt. -133 006 (INDIA)

Tel.: 91-171-2699297 , 2699537,

Fax: 91-171-2699154, 2699637

E-mail : shivsons@vsnl.com

Web-site : www.shivsons.com



PLAQUE MODELS

3D RAISED RELIEF PLASTIC MODELS

Vacuum formed on heavy duty plastic material to give a deep relief. Weatherproof & washable, capable of enduring years of rough classroom use. Realistically coloured, aesthetically pleasing and a great help to students to understand the subject. Useful for blind students as well.

HUMAN ANATOMY

Set of 11

- | | |
|----------------------|------------------------|
| (1) Skeleton | (2) Circulatory system |
| (3) Heart | (4) Nervous system |
| (5) Section of Brain | (6) Muscle |
| (7) Digestive system | (8) Respiratory system |
| (9) Ear | (10) Eye |
| (11) Kidneys | |

Available in following sizes:-

- A** 25 x 35 cm. sheets only in box.
- B** 25 x 35 cm. in plastic jacket with hanging hooks
- C** 35 x 50 cm. sheets only in box.
- D** 35 x 50 cm. in plastic jacket with hanging hooks
- E** 35 x 50 cm complete with hard backing, aluminium angle frame & hanging hooks
- F** 50 x 70 cm. sheets only in box.
- G** 50 x 70 cm. complete with hard backing, aluminium frame and hanging hooks.

While size 25 x 35 cm is available in sets only, other sizes are available singly as well.

B13002

HUMAN REPRODUCTIVE ORGANS

Set of 8

- (1) Male genital organs (front view)
- (2) Male genital organs (sagittal view)
- (3) How semen is formed
- (4) First week of egg development and implantation
- (5) Fertilization (cross section diagram of an ovary)
- (6) Eight months old foetus
- (7) Various stages of embryonic development
- (8) Female genital organs (sagittal view)

Available in following sizes:-

- A** 25 x 35 cm. sheets only in box.
- B** 25 x 35 cm. in plastic jacket with hanging hooks
- C** 35 x 50 cm. sheets only in box.
- D** 35 x 50 cm. in plastic jacket with hanging hooks
- E** 35 x 50 cm complete with hard backing, aluminium angle frame & hanging hooks
- F** 50 x 70 cm. sheets only in box.
- G** 50 x 70 cm. complete with hard backing, aluminium frame and hanging hooks.

While size 25 x 35 cm is available in sets only, other sizes are available singly as well.

B13004



BOTANY SERIES IV

Set of 8

- | | |
|--------------------------|--|
| (1) Plant kingdom | (2) Germination of sunflower and maize |
| (3) Germination of bean | (4) Yeast and pea |
| (5) Rhizopus and Mucor | (6) Fern |
| (7) Insectivorous plants | (8) Malvaceae |

Available in following sizes:-

- A 25 x 35 cm. sheets only in box.
- B 25 x 35 cm. in plastic jacket with hanging hooks
- C 50 x 70 cm. sheets only in box.
- D 50 x 70 cm. complete with hard backing, aluminium frame and hanging hooks.

While size 25x35 cm is available in sets only, other sizes are available singly as well.

B13012

ZOOLOGY SERIES I

Set of 8

- | | |
|-------------------------|--------------------|
| (1) Typical animal cell | (2) Animal mitosis |
| (3) Hydra | (4) Paramecium |
| (5) Ameoba proteus | (6) Hookworm |
| (7) Tapeworm | (8) Earthworm |

Available in following sizes:-

- A 25 x 35 cm. sheets only in box.
- B 25 x 35 cm. in plastic jacket with hanging hooks
- C 50 x 70 cm. sheets only in box.
- D 50 x 70 cm. complete with hard backing, aluminium frame and hanging hooks.

While size 25x35 cm is available in sets only, other sizes are available singly as well.

B13021

ZOOLOGY SERIES II

Set of 8

- | | |
|--------------------------------|-------------------------------------|
| (1) Euglena | (2) Animal kingdom |
| (3) L.H. of frog (development) | (4) L.H. of frog (metamorphosis) |
| (5) L.H. of mosquito | (6) Epithelial & connective tissues |
| (7) Simple and complex tissues | (8) Rabbit dissection and skeleton |

Available in following sizes:-

- A 25 x 35 cm. sheets only in box.
- B 25 x 35 cm. in plastic jacket with hanging hooks
- C 50 x 70 cm. sheets only in box.
- D 50 x 70 cm. complete with hard backing , aluminium frame and hanging hooks.

While size 25x35 cm is available in sets only, other sizes are available singly as well..

B13023

ZOOLOGY SERIES III

FROG

Set of 8

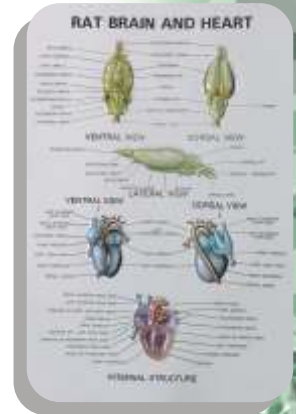
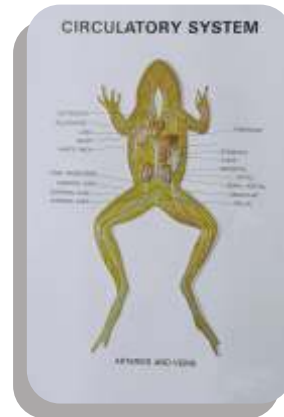
- (1) Frog anatomy and skeleton
- (2) Frog digestive system
- (3) Frog circulatory system
- (4) Frog respiratory system
- (5) Frog nervous system
- (6) Frog reproductive system, male
- (7) Frog reproductive system, female
- (8) Frog heart

Available in following sizes:-

- A** 25 x 35 cm. sheets only in box.
- B** 25 x 35 cm. in plastic jacket with hanging hooks
- C** 50 x 70 cm. sheets only in box.
- D** 50 x 70 cm. complete with hard backing, aluminium frame and hanging hooks.

While size 25x35 cm is available in sets only, other sizes are available singly as well..

B13025



ZOOLOGY SERIES IV

RAT

Set of 8

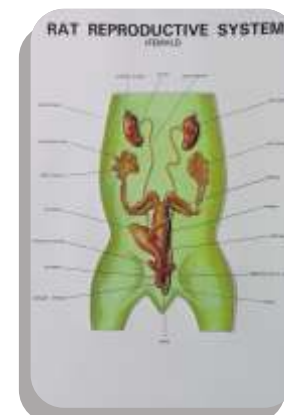
- (1) Rat anatomy, dissection showing internal organs (female)
- (2) Rat digestive system
- (3) Rat circulatory system
- (4) Rat respiratory system
- (5) Rat excretory system
- (6) Rat reproductive system (male)
- (7) Rat reproductive system (female)
- (8) Rat brain & heart

Available in following sizes:-

- A** 25 x 35 cm. sheets only in box.
- B** 25 x 35 cm. in plastic jacket with hanging hooks
- C** 50 x 70 cm. sheets only in box.
- D** 50 x 70 cm. complete with hard backing, aluminium frame and hanging hooks.

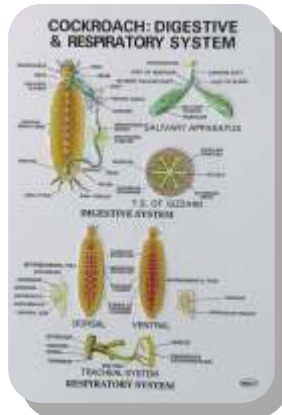
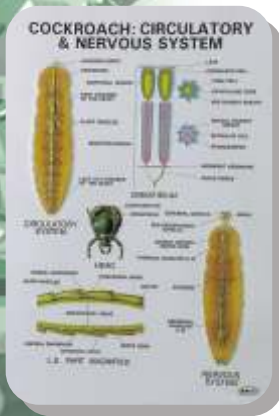
While size 25x35 cm is available in sets only, other sizes are available singly as well..

B13027



ZOOLOGY SERIES V

Set of 8



- (1) Life History of Honey Bee
- (2) Life History of Silkworm
- (3) Life History of House Fly
- (4) Malarial Parasite (Plasmodium)
- (5) Cockroach, circulatory & nervous systems
- (6) Cockroach, external features
- (7) Cockroach, digestive & respiratory systems
- (8) Earthworm, circulatory & excretory systems

Available in following sizes:-

- A** 25x35 cm. sheets only in box.
- B** 25x35 cm. in plastic jacket with hanging hooks
- C** 50x70 cm. sheets only in box.
- D** 50x70 cm. complete with hard backing, aluminium frame and hanging hooks.

While size 25x35 cm is available in sets only, other sizes are available singly as well..

B13028



NEW ADDITIONS

3D RAISED RELIEF MODELS

Size 50x70 cm.

B13030 HUMAN SKIN

B13032 HUMAN NERVOUS SYSTEM

B13033 TYPE OF HUMAN MUSCULAR TISSUES

B13034 HUMAN ENDOCRINE SYSTEM

B13036 PERCH

