

MICROTOME

HAND MICROTOME **B**

A handy and simple model with wide flat top, suitable for sectioning of fresh tissues. Screw drum is graduated in 100 close divisions and will cut the specimen in steps of 10 microns each. Complete with a single edged razor blade.

B10552



HAND MICROTOME

As B10552, but with differential screw, screw drum is graduated in 50 wide divisions.

B10554

TABLE CLAMPING DEVICE

For B10552 to fix the microtome to the table.

B10556



HAND MICROTOME **C**

Specially designed for cutting paraffin embedded specimens in varying thickness upto 50 microns, in steps of 5 microns. Cast aluminium housing with stainless steel top, complete with table clamp, fine brush, 4 microscopic slides, 1 pkt razor blades, in wooden box, with instructions.

B10558

ROCKING MICROTOME **D**

Ideal for elementary student and routine work, well designed and sturdy model to cut comparatively soft wax embedded tissues, ensuring uniformity in the cutting. It can easily section specimens upto 20 mm dia. The thickness of the sections can be varied from 2 microns to 24 microns in steps of 2 microns each. With a set of three object holders, one microtome razor with handle, one honing plate, one bottle oil for lubrication, dust cover and wooden cabinet.

B10562





ROTARY MICROTOME **A**

A sectioning equipment, economical and simple, yet providing all facilities of a standard rotary microtome. The internal mechanism is fully enclosed in a sturdy metal case, for protection against dust and grit & is driven by a handle which can be locked in position. A ball & socket type movement permits use of the entire knife edge. With a feed range of 1 to 25 microns in steps of 1 micron. Supplied complete with a set of three object holders, one razor 120 mm with back and handle, one honing plate, one bottle of oil for lubrication, dust cover and wooden cabinet.

B10565



PRECISION ROTARY MICROTOME **B**

A fully dependable sectioning equipment designed for precise sectioning of tissues up to 1 micron thickness. It has a front located feed indicator with cam drive system for accurate feed setting from 1 to 50 microns in steps of 1 micron. Prominent features include independent feed mechanism with automatic safety device, universal knife holder with lateral movement to permit use of entire knife edge, ball and flange type object holder for accurate centering of the specimen and full swing protective cover for easy cleaning and lubrication. The equipment assures smooth operation throughout the long life of the instrument as individual components are manufactured with modern techniques. The microtome razor is fabricated from fine grain steel alloy tested for microstructure and is heat treated to maintain its sharpness and strength. Supplied complete with one razor 120 mm with back and handle, a set of three object holders, one honing plate, oil can, dust cover, in wooden cabinet.

B10575



AUTOMATIC KNIFE SHARPENER **C**

Portable, precision automatic knife sharpener with timer 0-60 minutes to adjust sharpening time. This equipment can sharpen all microtome knives up to 140 mm in length. Complete with one universal holder, two honing plates, one bottle honing glass compound, one knife inspection block and one re-dressing pad but without micro abrasives.

B10580

ALSO AVAILABLE : FREEZING MICROTOMES

ACCESSORIES FOR MICROTOMES

RAZOR **D**

High quality carbon steel, flat on one side, hollow ground on the other, right handed.

B10583



RAZOR ATTACHMENT

A simple attachment permitting a safety blade in place of microtome knife, suitable for cutting accurate sections

B10585

MICROTOME RAZOR **E**

For rotary microtomes fabricated from fine grain special steel, heat treated and tested for microstructure, both sides wedged, supplied with back and handle

B10590 Size 120 mm

B10591 Size 140 mm

B10592 Size 160 mm



MICROTOME RAZOR

For rocking microtomes

B10593

OBJECT HOLDERS **F**

B10604 Set of three object holders for rotary microtomes

B10606 Set of three different object holders for rocking microtomes.



HONING STONE

B10610 Size 20 cm

LEATHER STRAP

Mounted in wooden frame, for final stropping of the knife

B10615

L-MOULDS **G**

Pair, made of brass, size 50x25x15 cm.

B10618



MICRO ABRASIVE SUSPENSION

200 ml bottle

B10624 For coarse honing

B10625 For fine honing



PARAFFIN EMBEDDING BATH **A**

Thermostatically controlled. Double walled, with cups and sleeves for glass tubes.

- B10630/1** 4 cups & 6 sleeves
- B10630/2** 6 cups & 8 sleeves
- B10630/3** 12 cups & 14 sleeves



TISSUE FLOATATION BATH **B**

For preparing tissue sections for microscopic slides after embedding. Double walled, inside is of seamless matt black anodised aluminium and outside is of mild steel sheet with epoxy powder coating. Thermostatic control from ambient temperature to 80° C ± 0.5° C. Complete with indicator light, cord and plug, with thermometer clamp, but without thermometer, for working on 220/240V 50 Hz.

- B10633** Dia 200 mm Depth 75 mm
- B10634** Dia 250 mm Depth 125 mm



STAINING BOTTLE STAND **C**

For twelve 30 ml dropping bottles, polished hard wood.

B10640



STAINING TROUGH **D**

Glass with moulded glass cover, for 10 slides, back to back.

B10644



STAINING JAR, COPLIN **E**

Glass, with moulded cover to take upto 10 slides, back to back.

B10648



STAINING JAR, COPLIN **F**

High density polyethylene, to take upto 10 slides, back to back, grooved to hold slides in vertical position, with dome shaped screw threaded cap.

B10650

MICRO SLIDES

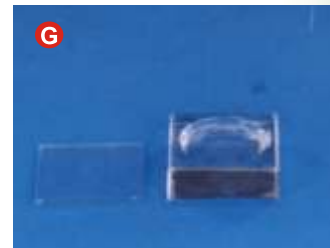
BIOLOGY

CAVITY BLOCK **G**

Glass, block form with cavity, complete with glass cover

B10652 40x40 mm

B10653 60x60 mm



MICROSCOPE SLIDES **H**

Made from optically flat and corrosion resistant clear glass, 75x25mm, ground edges, box of 50 slides,

Thickness of glass

B10660 2 mm.

B10662 1.35 mm.

B10664 1.25 mm.

B10666 1.15 mm.

B10668 0.9 to 1.0 mm.

B10670 Frosted 1.35 mm



MICROSCOPE CAVITY SLIDES

Polished, cavities are of 16 to 18 mm dia. Made from non-corrosive glass, polished edges, size 75x25x1.5 mm, pack of 10, in a box.

B10672 **I** With one circular cavity

B10673 **J** With two circular cavities

B10674 **K** With three circular cavities



MICRO SLIDES V.D.R.L.

Cavity slides for V.D.R.L., Kline, B.J.L. and other sero-diagnostic tests. Slide size 75X56X3 mm with polished concave cavities, each 16 mm dia x 1.75 mm depth with polished edges, frosted surface for smooth marking. Each piece packed in velvet lined box.

B10677 **L** 6 cavities

B10678 8 cavities

B10679 **M** 10 cavities

B10680 **N** 12 cavities



MICRO SLIDES, BLOOD GROUPING

Size 100x100x10 mm, 12 cavities each of 21 mm dia & 4 mm depth, with frosted slide surface for smooth marking, individually packed.

B10682 **P**



MICRO COVER GLASS **A**

Made from clear flat glass, uniform in size and free from scratches, packed in plastic box, net weight 10 gms.

Circular

- B10687** Dia. 18 mm
- B10688** Dia. 19 mm
- B10689** Dia. 22mm

Square

- B10691** Size 18 x 18 mm
- B10692** Size 22 x 22 mm
- B10693** Size 24 x 24 mm

Rectangular

- B10696** Size 22 x 30 mm
- B10697** Size 22 x 40 mm



LABELS

For microscopic slides, self adhesive

B10699



CANADA BALSAM BOTTLE

With drop on cap and glass rod

Capacity

- B10702** 30 ml
- B10703** 60 ml

SLIDE DRYING PLATE **B**

To reduce setting time of prepared slides. An electrically warmed flat plate with thermostatically controlled surface temperature. Treated to resist stains and corrosive reagents. Temperature range 25° C to 50° C, Size 400x265x65 mm.

B10708

SLIDE RACK **C**

A compact sturdy chamber holds 100 microscopic slides vertically in pre-numbered grooves. Moulded in white ABS with crystal clear polycarbonate top, for clear viewing

B10712

SLIDE BOX

Wooden box for holding microscopic slides of size 75x25 mm, serially numbered, with index card

Capacity

- B10720** **D** 25 slides
- B10722** **E** 50 slides
- B10725** **F** 100 slides

SLIDE RACK & BOX

SLIDE BOX

Plastic, compact, to hold slides 75x25 mm, vertically in pre-numbered grooves, provided with index card,

	Capacity
B10755 G	25 slides
B10756 H	50 slides
B10758 I	100 slides



SLIDE BOX **J**

Plastic, for 5 slides, with hinged top
B10765



SLIDE MAILER **K**

Plastic, for 2 slides
B10770



SLIDE TRAY **L**

Die-pressed anodised aluminium sheet designed to hold 20 slides in flat position, can be used in incubator for drying slides and also to store mounted slides in a flat position.
B10775



SLIDE TRAY **M**

Dual purpose, made out of thick anodised aluminium sheet, die pressed, useful for staining slides in flat position and also for drying freshly prepared slides, in horizontal or vertical position in incubator, capacity 20 slides.
B10780



MICROSCOPIC SLIDE TRAY

Wooden, flat type, with hinged cover flap, to carry 20 slides in flat position in 20 serially numbered compartments, useful for carrying prepared slides to the class or to field.
B10785



SLIDE CABINET

Wooden laminated cabinet, drawers are of wood, each serially numbered & with velvet lined bottom, with index card frame and puller knobs, dustproof door with lock and with lever lock to prevent accidental complete drawer pull-out. An extra drawer is provided with index cards.

Capacity

B10801	500 slides in 5 drawers of 100 each
B10802 A	1000 slides in 10 drawers of 100 each
B10803	2000 slides in 10 drawers of 200 each
B10804	3000 slides in 15 drawers of 200 each
B10805	5000 slides in 20 drawers of 250 each
B10806	7500 slides in 30 drawers of 250 each
B10807	10000 slides in 40 drawers of 250 each



SLIDE CABINET, FLAT POSITION

With aluminium trays for 20 slides each, in flat position, lockable door, extra drawer with index cards

Capacity

B10831	500 slides in 25 trays
B10832	1000 slides in 50 trays
B10833	2000 slides in 100 trays
B10835	5000 slides in 250 trays
B10837	10000 slides in 500 trays



SLIDE CABINET, MULTIPURPOSE

To hold slides in flat as well as vertical position. The aluminium trays hold 20 slides each in flat position, the other half carries drawers to hold slides in vertical position which are serially numbered. Complete with extra drawer with index cards

Capacity

B10852 B	1000 slides	500 flat and 500 vertical
B10854	1600 slides	600 flat and 1000 vertical
B10858	2000 slides	800 flat and 1200 vertical

MAGNIFIERS

FLEXIBLE ARM MAGNIFIER **C**

A biconvex lens of 100 mm diam is mounted on a heavy base for stability. The arm, 300 mm long, and swivel lens mount enable the lens to be used in any position at any angle. Magnification x 2.

B10871



SLIDING MAGNIFIER **D**

A plano-convex lens set in a frame traverses on two parallel steel bars. Telescopic legs are fitted at each corner of the frame so that the magnifier can be located over objects of varying sizes.

Dimensions :

Lens diam	100 mm.
Stand length	350 mm.
Stand width	130 mm.
Stand height	100 to 150 mm.

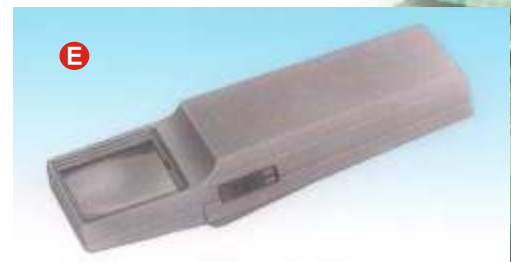
B10875



HAND HELD ILLUMINATED MAGNIFIER **E**

Provides magnification along with illumination. Consists of a light and a mounted acrylic lens. Ideal for viewing maps, directories, biological and geological specimens when room light is not adequate, requires penlight cell and torch bulb.

B10885



FLEXIBLE ARM ILLUMINATED MAGNIFIER **F**

A 130 mm diam lens and a 22 watt circular tubelight mounted around the lens, are mounted on a spring balanced stand with feather touch movement and a reach of 900 mm, allowing the lens to be placed in any position and keeps both the hands free. An ideal aid to fine assembly work, quality control and inspection. With a spot lens to increase magnification from x 2 to x 3.5. Field of view 230 mm, working distance 250 mm.

B10890

