

## MICROSCOPE PREPARED SLIDES

### HUMAN HISTOLOGY

- B15001** Human blood smear
- B15002** Human oesophagus t.s.
- B15003** Human skin v.s.
- B15004** Human stomach t.s.
- B15005** Human intestine t.s.
- B15006** Human testis t.s.
- B15007** Human ovary t.s.
- B15008** Human uterus t.s.
- B15009** Human vagina t.s.
- B15010** Human blood smear
- B15011** Human spermatozoa
- B15012** Human spinal cord t.s.
- B15013** Human liver t.s.
- B15014** Human kidney t.s.
- B15015** Human brain t.s.
- B15016** Human artery t.s.
- B15018** Human bone t.s.
- B15019** Human appendix t.s.
- B15020** Human lung t.s.

### BOTANY

#### CYANOPHYCEAE (BLUE GREEN ALGAE)

- B15101** Anabaena w.m.
- B15102** Gleotrichea w.m.
- B15103** Lyngbya w.m.
- B15104** Microcystis w.m.
- B15105** Nostoc ball t.s.
- B15106** Nostoc ball w.m.
- B15107** Nostoc in anthoceros thallus (section)
- B15108** Nostoc in cycas coralloid root (section)
- B15109** Oscillatoria w.m.
- B15110** Rivularia w.m.
- B15111** Sytonema

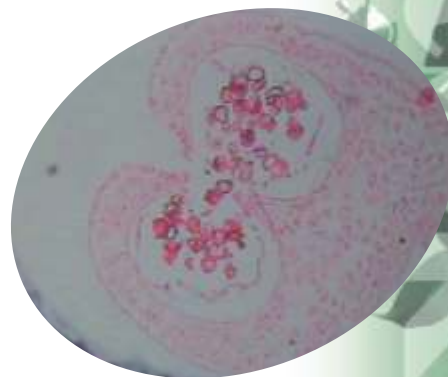
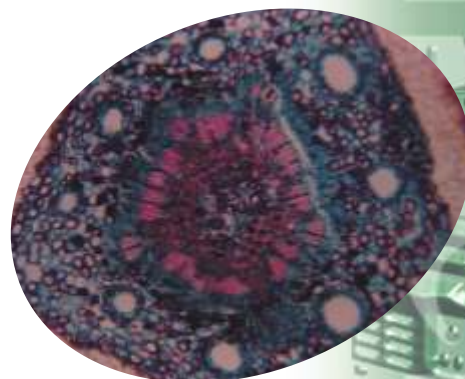
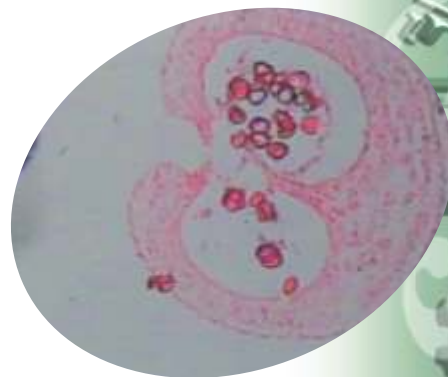
#### CHLOROPHYCEAE (GREEN ALGAE)

- B15121** Botrydium w.m.
- B15122** Chlamydomonas w.m.
- B15123** Chara apex w.m.
- B15124** Chara sexual w.m.

- B15125** Chara sexual organs v.s.
- B15126** Chara internode t.s.
- B15127** Chlorella w.m.
- B15128** Cladophora w.m.
- B15129** Coleochaete w.m.
- B15130** Closterium w.m.
- B15131** Cosmarium w.m..
- B15133** Hydrodictyon w.m.
- B15134** Euglena
- B15135** Eudorina w.m.
- B15136** Oedogonium vegetative w.m.
- B15137** Oedogonium Capcell w.m.
- B15138** Oedogonium macrandrous w.m.
- B15139** Oedogonium nannandrous w.m.
- B15140** Oedogonium oogonial w.m.
- B15141** Pandorina w.m.
- B15142** Spirogyra vegetative w.m.
- B15143** Spirogyra scalariform conjugation w.m.
- B15144** Spirogyra lateral conjugation w.m.
- B15145** Ulothrix vegetative w.m.
- B15146** Ulothrix reproductive w.m.
- B15147** Vaucheria reproductive w.m.
- B15148** Volvox daughter colony w.m.
- B15149** Volvox oogonial w.m.
- B15150** Volvox antheridal w.m.
- B15151** Volvox zygote w .m.
- B15152** Volvox mixed stage w.m.
- B15153** Zygnema conj w.m.

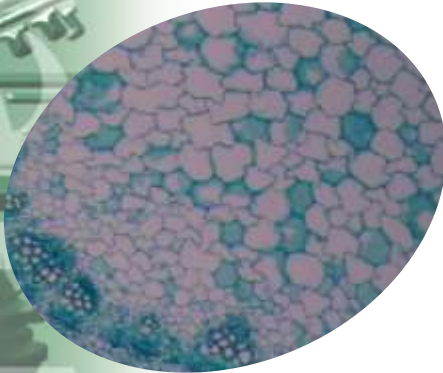
#### PHAEOPHYCEAE (BROWN ALGAE)

- B15161** Dictyota apical dichotomy w.m
- B15162** Dictyota oogonial thallus t.s.
- B15163** Dictyota antheridial thallus v.s
- B15164** Dictyota tetrasporic thallus v.s.
- B15165** Ectocarpus unilocular w.m.
- B15166** Ectocarpus plurilocular w.m.
- B15167** Ficus thallus t.s.
- B15168** Ficus male conceptacle v.s.
- B15169** Ficus female conceptacle vs
- B15170** Sargassum stipe t.s.
- B15171** Sargassum maleconceptacles v.s.
- B15172** Sargassum female conceptacles vs
- B15173** Sargassum leas t.s.
- B15174** Sargassum bladder t.s.



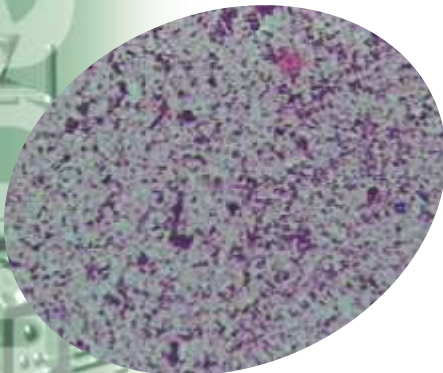
## RHODOPHYCEAE (RED ALGAE)

- B15181** Batrachospermum w.m
- B15182** Batrachospermum antheridial w.m
- B15183** Batrachospermum fruitbody w.m
- B15184** Polysiphonia vegetative w.m.
- B14585** Polysiphonia tetrasporic w.m.
- B15186** Polysiphonia cystocarpic w.m.
- B15187** Polysiphonia antheridia w.m.



## BACTERIOLOGY

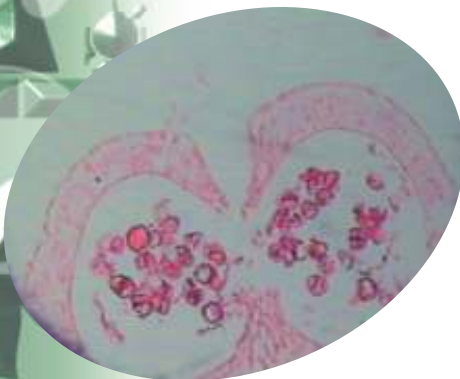
- B15191** Bacteria, (typical)
- B15192** Bacteria bacillus form
- B15193** Bacteria coccus form
- B15194** Bacteria spirillum form
- B15195** Bacteria in root nodule of legume t.s.



## FUNGI

### PHYCOMYCETES

- B15201** Alternaria
- B15202** Cercospora v.s
- B15203** Colletotrichum acervelli v.s.
- B15204** Cystopus (albugo conidia) white rust of mustard on leaf t.s.
- B15205** Cystopus asexual on stem
- B15206** Cystopus sexual with zygote on stem t.s.
- B15207** Fusarium
- B15208** Mucor sporangia w.m.
- B15209** Mucor sexual, zygospore
- B15210** Phytophthora w.m.
- B15211** Phytophthora on host leaf t.s
- B15212** Pythium w.m
- B15213** Saprolegnia vegetative w.m.
- B15214** Saprolegnia sexual w.m.



### ASCOMYCETES

- B15221** Aspergillus with conidia w.m.
- B15222** Erysiphae v.s.
- B15223** Morchella fruiting body t.s.
- B15224** Pencillium with conidia w.m
- B15225** Protomysis c.s.
- B15226** Peziza apothecia v.s.
- B15227** Xylaria through stroma c.s.
- B15228** Yeast w.m.

## BASIDIOMYCETES

- B15231** Agaricus pileus t.s
- B15232** Agaricus young fruit (complete with stipe and pileus) v.s
- B15233** Agaricus stipe t.s
- B15234** Puccinia uredo sori v.s.
- B15235** Puccinia teleuto sori v.s.
- B15236** Puccinia aecidia cup v.s.
- B15237** Puccinia pycnidia v.s.
- B15238** Puccinia aecidia and pycnidia v.s. on same slide
- B15239** Ustilago on host t.s. showing spores
- B15240** Uromyces v.s.
- B15241** Polyporus t.s.
- B15242** Polyporus l.s.
- B15243** Lycoperdon globe v.s.

## LICHEN

- B15246** Lichen apothecia v.s
- B15247** Lichen thallus v.s.

## BRYOPHYTA

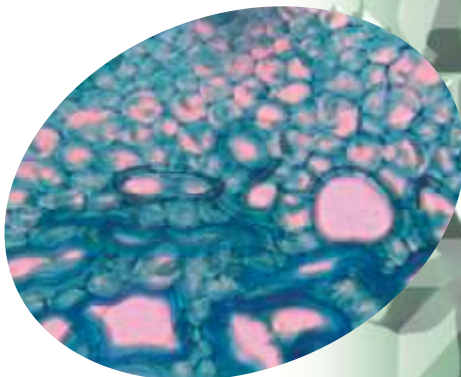
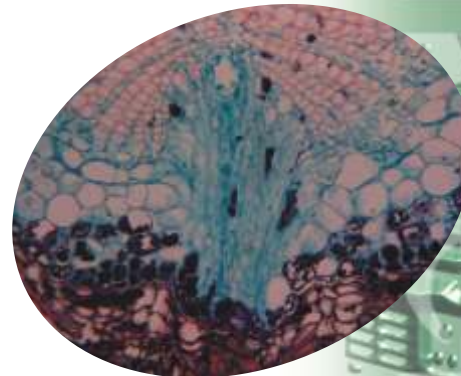
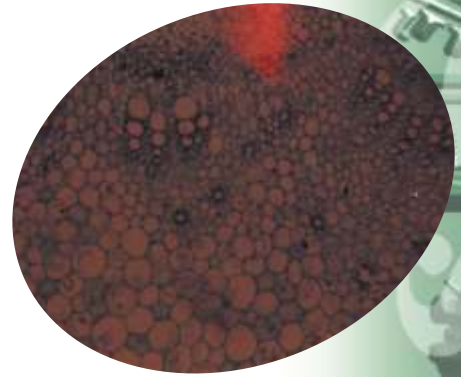
- B15251** Anthoceros thallus v.s. with nostoc colony
- B15252** Anthoceros thallus w.m. antheridia
- B15253** Anthoceros antheridial v.s.
- B15254** Anthoceros thallus w.m.
- B15255** Anthoceros thallus with sporophyte w.m.
- B15256** Anthoceros sporophyte t.s.
- B15257** Anthoceros sporophyte v.s.
- B15258** Riccia thallus, vegetative, w.m.
- B15259** Riccia thallus t.s
- B15260** Riccia thallus w.m. showing arrangement of sex organs.
- B15261** Riccia thallus antheridia v.s
- B15262** Riccia archegonia v.s
- B15263** Riccia sporophyte v.s (spore mothercell stage)
- B15264** Riccia sporophyte v.s. (mature)
- B15265** Moss plant w.m
- B15266** Moss plant with capsules

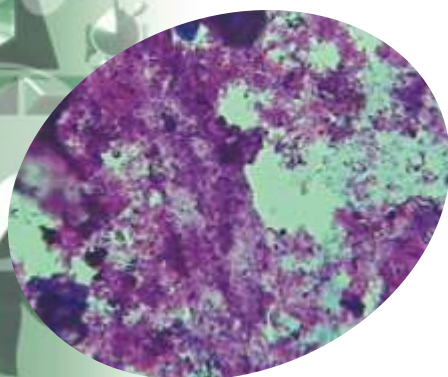
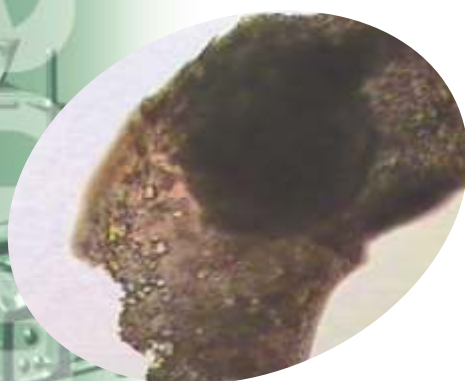
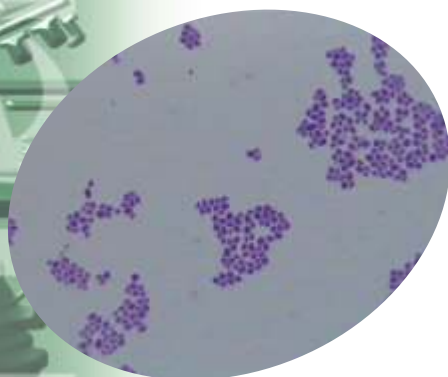
- B15267** Moss protonema w.m
- B15268** Moss capsule l.s
- B15269** Funaria plant with capsules w.m.
- B15270** Funaria archegonia v.s
- B15271** Funaria archegonia w.m
- B15272** Funaria antheridia v.s
- B15273** Funaria capsules v.s.
- B15274** Funaria stem v.s
- B15275** Funaria leaf t.s
- B15276** Funaria capsules v.s.
- B15277** Polytrichum plant with capsules w.m.
- B15278** Polytrichum capsule t.s.
- B15279** Polytrichum capsule l.s.
- B15280** Polytrichum archegonial head l.s
- B15281** Polytrichum antheridial head l.s.
- B15282** Polytrichum capsule median section
- B15283** Porella sporophyte w.m
- B15284** Porella archegonia w.m.
- B15285** Porella antheridia w.m.
- B15286** Porella plant w.m
- B15287** Marchantia thallus v.s.
- B15288** Marchantia gemma cup v.s.
- B15289** Marchantia antheridial head v.s
- B15290** Marchantia archegonial head v.s
- B15291** Marchantia young sporophyte v.s.
- B15292** Marchantia mature sporophyte v.s.
- B15293** Sphagnum veg. shoot.w.m.
- B15294** Sphagnum leaf w.m
- B15295** Sphagnum stem t.s.
- B15296** Cyathodium sporophyte v.s.
- B15297** Rebolia sporophyte v.s

## PTERODOPHYTA

- B15301** Adiantum rhizome t.s
- B15302** Adiantum root t.s
- B15303** Adiantum petiole t.s.
- B15304** Adiantum sporophyte t.s.
- B15305** Adiantum sorus t.s
- B15306** Dryopteris root t.s.
- B15307** Dryopteris rhizome t.s.
- B15308** Dryopteris petiole t.s
- B15309** Dryopteris rachis t.s.
- B15310** Dryopteris sporophyll v.s.
- B15311** Dryopteris sporangia w.m
- B15312** Pteris root t.s
- B15313** Pteris rhizome t.s.
- B15314** Pteris rachis t.s
- B15315** Pteris sporangia t.s.
- B15316** Pteris sporangia w.m.
- B15317** Fern leaflet with sporangia t.s.
- B15318** Fern rachis t.s.
- B15319** Fern stolon t.s.
- B15320** Fern spores teased w.m.

- B15321** Fern prothallus antheridia w.m.
- B15322** Fern prothallus archegonia w.m.
- B15323** Fern prothallus with archegonia and antheridia w.m.
- B15324** Fern prothallus developing embryo w.m.
- B15325** Fern antheridia v.s.
- B15326** Fern archegonia v.s.
- B15327** Fern prothallus with sporophyte w.m.
- B15328** Equisetum root t.s.
- B15329** Equisetum rhizome t.s.
- B15330** Equisetum stem t.s.
- B15331** Equisetum young cone t.s.
- B15332** Equisetum young cone l.s
- B15333** Equisetum mature cone t.s.
- B15334** Equisetum mature cone l.s.
- B15335** Equisetum prothallus
- B15336** Isoetes rhizome t.s.
- B15337** Isoetes microsporophyll c.s.
- B15338** Isoetes megasporophyll c.s.
- B15339** Isoetes leaf t.s.
- B15340** Isoetes root t.s.
- B15341** Lycopodium wightanum cone l.s.
- B15342** Lycopodium wightanum cone t.s.
- B15343** Lycopodium wightanum stem t.s.
- B15344** Lycopodium apex l.s.
- B15345** Lycopodium cernuum stem t.s.
- B15346** Lycopodium phelgmaria stem t.s.
- B15347** Lycopodium leaf t.s.
- B15348** Lycopodium root t.s.
- B15349** Marselia leaf t.s.
- B15350** Marselia root c.s.
- B15351** Marselia rhizome c.s.
- B15352** Marselia petiole c.s.
- B15353** Marselia sporophyte t.l.s
- B15354** Marselia sporophyte h.t.s
- B15355** Marselia sporophyte v.l.s
- B15356** Ophioglossum leaf c.s.
- B15357** Ophioglossum rhizome t.s.
- B15358** Ophioglossum root t.s.
- B15359** Ophioglossum spike t.s.
- B15360** Ophioglossum spike l.s.
- B15361** Psilotum stem t.s.
- B15362** Psilotum rhizome t.s.
- B15363** Psilotum leaf t.s
- B15364** Psilotum synangia t.s.
- B16365** Selaginella root t.s.
- B15366** Selaginella rhizophore t.s.
- B15367** Selaginella leaf t.s.
- B15368** Selaginella stem t.s.
- B15369** Selaginella spike v.s.
- B15370** Selaginella spike cleared w.m.
- B15371** Selaginella microsporangia w.m
- B15372** Osmunda spike t.s.





### GYMNOSPERMS

- B15381** Cycas normal root t.s.
- B15382** Cycas coralloid root t.s.
- B15383** Cycas leaflet t.s.
- B15384** Cycas rachis t.s.
- B15385** Cycas microsporophyll t.s.
- B15386** Cycas ovule l.s.
- B15387** Pinus male cone t.s.
- B15388** Pinus male cone l.s.
- B15389** Pinus female cone t.s.
- B15390** Pinus female cone l.s.
- B15391** Pinus pollengrains w.m.
- B15392** Pinus stem t.s.
- B15393** Pinus stem r.l.s.
- B15394** Pinus stem t.l.s.
- B15395** Pinus needle t.s.
- B15396** Pinus root, young t.s.
- B15397** Pinus root, old t.s.
- B15398** Pinus dwarf shoot t.s.
- B15399** Pinus wood t.s.
- B15400** Pinus ovule v.s.
- B15401** Gnetum stem t.s.
- B15402** Gnetum stem r.l.s.
- B15403** Gnetum stem t.l.s.
- B15404** Gnetum male cone t.l.s.
- B15405** Gnetum female cone t.s.
- B15406** Gnetum female cone l.s.
- B15407** Gnetum ovule v.s.
- B15408** Ephedra young root t.s.
- B15409** Ephedra root sec growth, t.s.
- B15410** Ephedra stem, sec growth, t.s.
- B15411** Ephedra male cone l.s.
- B15412** Ephedra female cone l.s.
- B15413** Ginkgo stem t.s.
- B15414** Ginkgo petiole t.s.
- B15415** Ginkgo male cone l.s.
- B15416** Ginkgo female cone l.s.
- B15417** Ginkgo ovule l.s.

### ANGIOSPERM

#### ANGIOSPERM ROOTS

- B15421** Allium root tips l.s.  
(showing mitotic divisions)
- B15422** Avenca pneumatophore t.s.
- B15423** Beta root, storage type, t.s.
- B15424** Cuscuta, (Haustoria) root,  
with host, t.s.
- B15425** Cucurbita root t.s.
- B15426** Dicot root, primary structure t.s.
- B15427** Dicot root, commencement  
of sec. growth, t.s.
- B15428** Ficus aerial root t.s.
- B15429** Ficus old root t.s.
- B15430** Hydrilla root, hydrophytic, t.s.
- B15431** Ipomea root t.s.

- B15432** Legume root with nodules t.s.
- B15433** Maize root t.s.
- B15434** Monocot root t.s.
- B15435** Nymphaea root, typical  
hydrophyte t.s.
- B15436** Orchid root showing  
velamen t.s.
- B15437** Pandanus aerial root for  
lenticel t.s.
- B15438** Sunflower, (helianthus), young  
root t.s.
- B15439** Sunflower, (helianthus),  
old root t.s.
- B15440** Tinospora aerial root t.s.
- B15441** Ranunculus root t.s.

#### ANGIOSPERM STEM

- B15452** Amaranthus stem t.s.
- B15453** Aristolachia old stem t.s.
- B15454** Begonia stem t.s.
- B15455** Begonia stem l.s.
- B15456** Boerhavia old stem t.s.
- B15457** Bougainvillea stem t.s.
- B15458** Cana indica stem t.s.
- B15459** Calotropis stem t.s.
- B15460** Casurina stem t.s.
- B15461** Chenopodium stem t.s.
- B15462** Clematis stem t.s.
- B15463** Coleus stem t.s.
- B15464** Cucurbita stem, young t.s.
- B15465** Cucurbita stem old t.s.
- B15466** Cucurbita stem l.s.
- B15467** Euphorbia stem t.s.
- B15470** Helianthus stem l.s.
- B15471** Jussiaea stem t.s.
- B15472** Mirabilis stem t.s.
- B15473** Muhlenbeckia cladode  
t.s. (xerophytic)
- B15474** Nyctanthus stem t.s.
- B15475** Nymphaea stem t.s.
- B15476** Potamogeton stem t.s.
- B15477** Potato tuber c.s. for starch  
grain
- B15478** Ranunculus stem t.s.
- B15479** Salvadoria stem t.s. (xerophytic)
- B15480** Sunflower, (helianthus) stem  
young t.s.
- B15481** Sunflower, (helianthus)  
stem old t.s.
- B15482** Tinospora stem t.s.
- B15483** Vitis stem t.s.
- B15484** Dracaena stem t.s.
- B15485** Hydrilla stem t.s.
- B15486** Maize, (zea mays), stem t.s.
- B15487** Maize, (zea mays), stem l.s.
- B15488** Monocot stem, typical t.s.
- B15489** Smilax stem t.s.

## ANGIOSPERM

### LEAVES

- B15490 Allium leaf t.s.
- B15491 Bryophyllum leaf t.s.
- B15492 Dracaena leaf t.s.
- B15493 Drosera leaf w.m.
- B15494 Dicot leaf typical t.s.
- B15495 Echinopsia petiole t.s.
- B15496 Ficus leaf t.s.
- B15497 Helianthus,(sunflower) leaf t.s.
- B15498 Hydrilla leaf t.s.
- B15499 Utricularia w.m.
- B15500 Maize leaf t.s.
- B15501 Monocot leaf typical t.s.
- B15502 Nymphaea leaf t.s.
- B15503 Nymphaea petiole t.s.
- B15504 Nerium leaf t.s.
- B15505 Vallinaria leaf t.s.

### CELL/CELLCONTENTS/ TISSUES

- B15511 Typical plant cell, (onion)
- B15512 Parenchyma t.s.
- B15513 Parenchyma l.s.
- B15514 Aerenchyma v.s.
- B15515 Collenchyma t.s.
- B15516 Sclerenchma t.s.
- B15517 Stone cell t.s.
- B15518 Stomata, leaf epidermis,w.m.
- B15519 Phloem seive tubes v.s.
- B15520 Oil cavities citrus fruit v.s.
- B15521 Protoxylem & metaxylem ts
- B15522 Starch grain (potato)
- B15523 Starch grain (wheat)
- B15524 Bean cotyledon t.s.
- B15525 Aleurone layer wheat grain t.s.
- B15526 Protein bodies castor endosperm t.s.
- B15527 Spcero raphides in section
- B15528 Raphid in stem l.s.
- B15529 Cistolth in ficus leaf t.s.
- B15530 Unicellular hairs
- B15531 Multicellular hairs
- B15532 Glandular hairs
- B15533 Stinging hairs

### PLACENTATION OF OVULE

- B15541 Axile placentation
- B15542 Basal placentation
- B15543 Free central placentation t.s.
- B15544 Free central placentation v.s.
- B15545 Marginal placentation t.s.
- B15546 Parietal placentation t.s.
- B15547 Superficial placentation t.s.

### TYPES OF OVULES

- B15551 Orthoropus type v.s.
- B15552 Anatropus type v.s.
- B15553 Complylotrous type v.s.
- B15554 Agrinotropus type v.s.

### MITOSIS

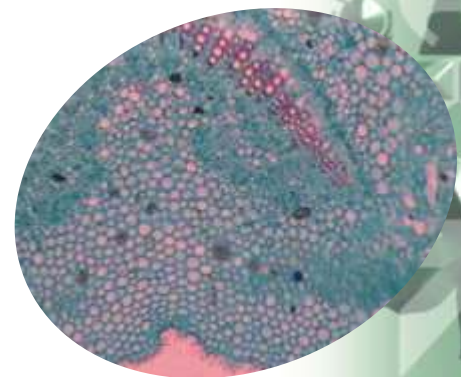
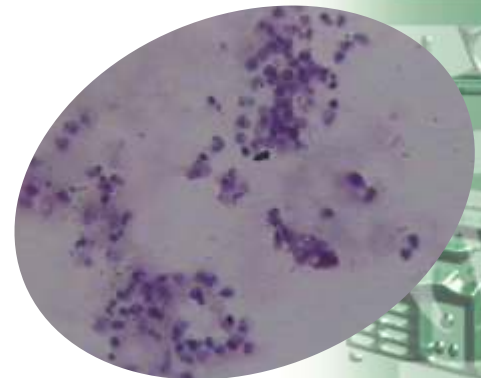
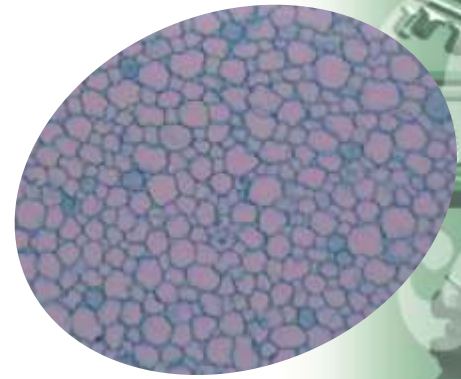
An onion root tip smear. Out of the full smear one particular stage is marked and brought out in a small black circle

- B15561 Interphase
- B15562 Prophase
- B15563 Metaphase
- B15564 Anaphase
- B15565 Telophase

### MEIOSIS

Out of the full smear,one particular stage is marked and brought out in a small black circle.

- B15571 Leptotene stage
- B15572 Zygotene stage
- B15573 Pachytene stage
- B15574 Diplotene stage
- B15575 Diakinesis stage
- B15576 Metaphase I
- B15577 Anaphase I
- B15578 Telophase I
- B15579 Metaphase II
- B15580 Anaphase II
- B15581 Telophase II



### FLORAL MOROPHOLOGY

- B15582** Anther, typical young t.s.
- B15583** Anther dehiscent t.s.
- B15584** Euphorbia cyathodium v.s.
- B15585** Hypanthodium v.s.
- B15587** Epigynous flower l.s.
- B15588** Hypogynous Flower l.s.
- B15589** Perigynous flower l.s.
- B15590** Pollen grain typical type
- B15591** Pollen grain mixed type w.m.
- B15592** Ranunculus flower l.s.
- B15593** Sunflower capitulum v.s.
- B15594** Composite inflorescence l.s. ovule, showing megasporogenesis.
- B15595** L.S.ovule showing globular embryo heart shaped embryo.
- B15596** L.S. dicot seed showing seed coat, embryo and endosperm.
- B15597** Zea mays young seed v.s.
- B15598** Seed germination seed l.s. with radicle. stem apem coleoptile

### ANTHER DEVELOPMENT

- B15599** T.S. Young anther showing mass of parenchymatous B cell.
- B15600** T.S. Young anther showing differentiation of archesporial cells.
- B15601** T.S. Anther showing different wall layers and sporogenous tissue.
- B15602** Anther t.s. (showing microspore tetrads)
- B15603** T.S. Anther mature with pollen grain
- B15604** Anther t.s. (showing meiosis)
- B15605** Development of dicot embryo Set of 4 slides
- B15606** Development of monocot embryo, Set of 3 slides

### ZOOLOGY SLIDES

#### PROTOZOA

- B16001** Amoeba proteus
- B16002** Amoeba binary fission
- B16003** Foraminifera shell w.m.
- B16004** Euglena
- B16005** Paramecium-binary fission
- B16006** Paramecium-conjugation
- B16007** Paramecium w.m.
- B16008** Balantidium coli w.m.
- B16009** Chlamydomonas w.m.
- B16010** Entamoeba histolytica w.m.
- B16011** Leishmania donovani w.m.
- B16012** Malarial parasite (in human blood)
- B16013** Malarial parasite (signet ring)
- B16014** Monocystis (Trophozoite)
- B16015** Monocystis (Sporozoite)
- B16016** Noctiluca w.m.
- B16017** Polystomella w.m.
- B16018** Trypanosoma in blood
- B16019** Volvox
- B16020** Vorticella

#### PORIFERA

- B16021** Grantia t.s.
- B16022** Sycon t.s.
- B16023** Sycon l.s.

#### COELENTERATA

- B16024** Hydra with bud w.m.
- B16025** Hydra with testis w.m.
- B16026** Hydra t.s.
- B16027** Hydra l.s.
- B16028** Hydra w.m.
- B16029** Hydra with ovaries w.m.
- B16030** Hydra with medusa w.m.
- B16031** Hydra with gastrula w.m.
- B16032** Obelia colony w.m.
- B16033** Obelia medusa w.m.
- B16034** Ephyra larva w.m.
- B16035** Sea anemone t.s.
- B16036** Sea anemone l.s.
- B16037** Aurelia w.m.
- B16038** Aurelia tentaculocyst w.m.

## PLATYHELMINTHES

- B16041 Redia w.m.
- B16042 Cercaria w.m.
- B16043 Redia and cercaria w.m.
- B16044 Planaria w.m.

## NEMATHELMINTHES

- B16045 Oxyuris w.m.
- B16046 Trichinella spiralis (cyst in muscles)
- B16047 Wucheraria bancrofti (filaria)

## ANNELIDA

- B16048 Earthworm m.l.s. thr. ant region
- B16049 Earthworm t.s. thr. gizzard
- B16050 Earthworm t.s. thr. Typhlosolar region
- B16051 Earthworm setae w.m.
- B16052 Earthworm t.s. thr. pharynx
- B16053 Earthworm t.s. thr. ointestine
- B16054 Earthworm ovary w.m.
- B16055 Earthworm brain ring w.m.
- B16056 Earthworm septal nephridia
- B16057 Earthworm pharyngeal nephridia w.m.
- B16058 Leach t.s. thr. crop (with diverticula)
- B16059 Leech t.s. thr. crop (without diverticula)
- B16060 Leech t.s. thr. stomach
- B16061 Leech t.s. thr. penis sac & epididymis
- B16062 Leech t.s. thr. rectum & post sucker
- B16063 Heteronereis w.m.(small)
- B16064 Leech jaw w.m.
- B16066 Trochophore larva w.m.

## ARTHROPODA (INSECTA)

- B16071 Butterfly mouth parts w.m.
- B16072 Honey bee sting apparatus w.m.
- B16073 Megalopa larva w.m.
- B16074 Mite w.m.
- B16075 Peripatus t.s.
- B16076 Prawn gill w.m.
- B16077 Prawn statocyst w.m.
- B16078 Scorpion book lung
- B16079 Sacculina t.s.
- B16080 Tick w.m.
- B16081 Anopheles male w.m.
- B16082 Anopheles female w.m.
- B16083 Anopheles mouth parts male
- B16084 Anopheles mouth parts female

- B16085 Culex mouth parts male
- B16086 Culex mouth parts female
- B16087 Cockroach mouth parts
- B16088 Cockroach salivary gland
- B16090 Grasshopper mouth par t.s.
- B16091 Housefly mouth
- B16092 Termite soldier w.m.
- B16093 Centipede w.m. stinging leg
- B16094 Bird louse w.m.
- B16095 Mysis w.m.
- B16096 Metazoea larve w.m.
- B16097 Zoea larva
- B16098 Nauplius larva w.m.
- B16099 Oniscus w.m.
- B16100 Head louse w.m.
- B16101 Cat flea w.m.
- B16102 Mosquito mouth parts w.m.
- B16103 Daphnia w.m.
- B16104 Cyclops w.m.

## MOLLUSCA

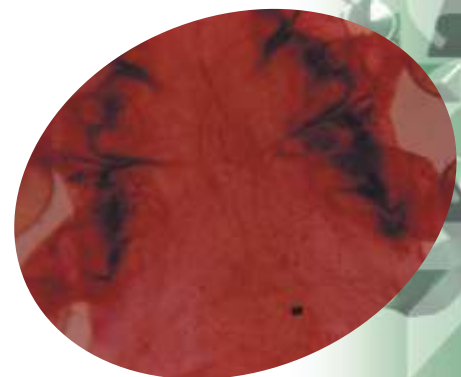
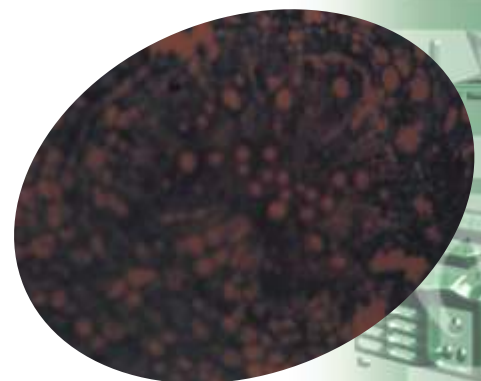
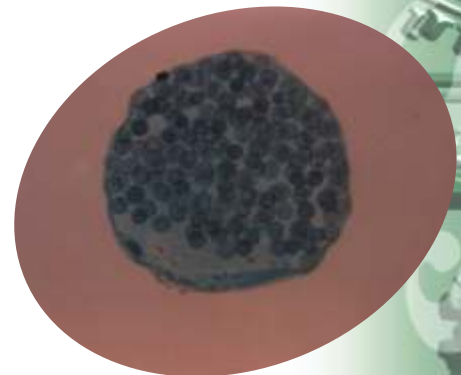
- B16111 Radula of pila w.m.
- B16112 Glochidium larva w.m.
- B16113 Freshwater mussel shell ground thin
- B16114 Freshwater mussel gill t.s.
- B16115 Valiger larva

## ECHINODERMATA

- B16121 Bipinnaria larva w.m.
- B16122 Pluteus larva w.m.
- B16123 Echinopluteus w.m.
- B16124 Starfish arm t.s.

## PROTOCHORDATES

- B16131 Amphioxus t.s. through pharynx
- B16132 Amphioxus t.s. through intestine
- B16133 Amphioxus t.s. caudal region
- B16134 Amphioxus w.m.
- B16135 Amphioxus t.s. tail
- B16136 Ciona w.m.
- B16137 Herdmania spicules
- B16138 Salpa w.m.
- B16139 Balanoglossus t.s. proboscis
- B16140 Balanoglossus t.s. collar
- B16141 Balanoglossus t.s. trunk
- B16142 Balanoglossus anterior region l.s.
- B16143 Balanoglossus t.s. branchial region.
- B16144 Tornaria larva w. m.
- B16145 Ammocoetes larva branchial region t.s.



### PISCES

- B16151 Ctendoid scale w.m.
- B16152 Rhomboid scale w. m.
- B16153 Cycloid scale w.m.
- B16154 Placoid scale w. m.

### AMPHIBIA HISTOLOGY

- B16161 Frog blood smear
- B16162 Frog oesophagus t.s.
- B16163 Frog tongue t.s.
- B16164 Frog spleen t.s.
- B16165 Frog rectum w.m.
- B16166 Frog skin w. m..
- B16166/1 Frog skin v.s.
- B16167 Frog lung l. s
- B16168 Frog liver t.s.
- B16169 Frog pancreas t.s.
- B16170 Frog stomach t.s.
- B16171 Frog intestine t.s.
- B16172 Frog lung t.s.
- B16173 Frog lung t.s. (Blown up)
- B16174 Frog kidney t.s.
- B16175 Frog testis t.s.
- B16176 Frog ovary t.s. (young)
- B16177 Frog ovary t.s. (mature)
- B16178 Bone ground thin
- B16179 Bone decalcified t.s.  
Cartilage t.s.
- B16180 Artery t.s
- B16181 Skin with chromatophores ts
- B16182 Heart l.s.
- B16183 Vein t.s.

### MAMMALIAN HISTOLOGY (RAT OR RABBIT)

- B16191 Liver t.s.
- B16192 Pancreas t.s.
- B16193 Intestine t.s.
- B16194 Lung t.s.
- B16195 Kidney t.s.
- B16196 Testis t.s.
- B16197 Appendix t.s.
- B16198 Oesophagus t.s.
- B16199 Thyroid gland t.s.
- B16200 Stomach t.s.
- B16201 Ovary t.s.
- B16202 Adrenal gland t.s.
- B16203 Kidney l.s.
- B16204 Spleen t.s.
- B16205 Caecum t.s.
- B16206 Rectum t.s.
- B16207 Blood smear
- B16208 Squamous epithelium
- B16209 Stratified squamous epithelium  
v.s.

- B16210 Columnar epithelium
- B16211 Ciliated epithelium
- B16212 Areolar tissue
- B16213 Adipose tissue
- B16214 Dyaline cartilage t.s
- B16215 Bone ground thin t.s.
- B16216 Bone decalcified t.s.
- B16217 Striated muscle l.s.
- B16218 Cardiac muscle l.s.
- B16219 Non-striated muscle l.s.
- B16220 Nerve t.s.
- B16221 Ovary adult v.s.
- B16222 Artery t.s.
- B16253 Blood smear
- B16254 Ileum t.s.
- B16255 Ovary with corpus luteum
- B16256 Spinal cord t.s.
- B16257 Stomach cardiac t.s.
- B16258 Tooth decalcified
- B16259 Brain cerebrum t.s.
- B16260 Bone calcified t.s.
- B16261 Duodenum t.s.
- B16262 Heart t.s.
- B16263 Jejunum t.s.
- B16264 Larynx t.s.
- B16265 Oviduct t.s.
- B16266 Skin v.s.
- B16267 Tongue t.s.
- B16268 Vein t.s.
- B16269 Brain cerebellum t.s.
- B16270 Epiglottis t.s.
- B16271 Heart l.s.
- B16272 Lung l.s.
- B16273 Lymph gland t.s.
- B16274 Parathyroid gland t.s.
- B16275 Salivary gland
- B16276 Penis t.s.
- B16277 Stomach fundus t.s.
- B16278 Retina v.s.
- B16279 Tail t.s.
- B16280 Uterus t.s.

### PARASITOLOGY

- B16321 Ascaris female t.s.
- B16322 Ascaris male t.s.
- B16323 Ascaris male & female t.s. in  
one slide
- B16324 Liver fluke w.m.
- B16325 Liver fluke m.l.s. thr.  
anterior region
- B16326 Liver fluke t.s.thr. testis
- B16327 Liver fluke t.s. thr. uterus
- B16328 Liver fluke t.s. thr. cirrus sac

- B16329** Liver fluke t.s. thr. anal region
- B16330** Liver fluke t.s. thr. post sucker
- B16331** Liver fluke t.s. thr. middle region
- B15332** Liver fluke t.s. thr. gonad region
- B16333** Liver fluke metacercaria
- B16334** Liver fluke sporocyst w.m.
- B16335** Liver fluke miracidium w.m.
- B16336** Tapeworm scolex w.m.
- B16337** Tapeworm mature proglottid w.m.
- B16338** Tapeworm gravid proglottid w.m.
- B16339** Tapeworm proglottid immature
- B16340** Tapeworm t.s.
- B16341** Ancylostoma (hook worm)
- B16342** Dracunculus
- B16343** Echinococcus w.m.s

## FROG EMBRYOLOGY

- B16351** Egg v.s.
- B16352** Early cleavage w.m.
- B16353** Late cleavage w.m.
- B16354** Embryo w.m. 4 mm
- B16355** Frog & cell stage w.m.
- B16356** Frog blastula v.s.
- B16357** Frog early gastrula v.s.
- B16358** Frog gastrula (yolk plug) v.s.
- B16359** Frog neural plate v.s.
- B16360** Frog neural fold t.s.
- B16361** Frog neural tube t.s.
- B16362** Tadpole w.m.
- B16363** Tadpole trunk
- B16364** Tadpole head region
- B16365** Tadpole 4 mm sagittal section
- B16366** Tadpole 7mm (external gill stage w.m.)
- B16367** Tadpole 7mm sagittal section
- B16368** Tadpole 10 mm (internal gill stage) w.m.
- B16369** Tadpole 10 mm t.s. internal gill
- B16370** Tadpole 10 mm heart

## CHICK EMBRYOLOGY

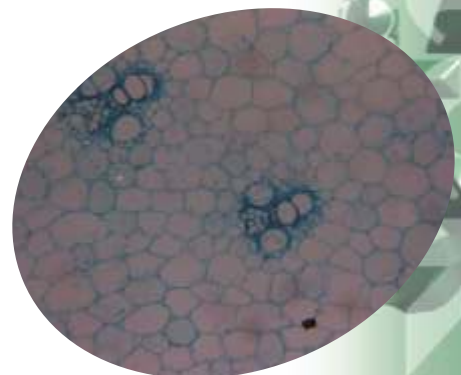
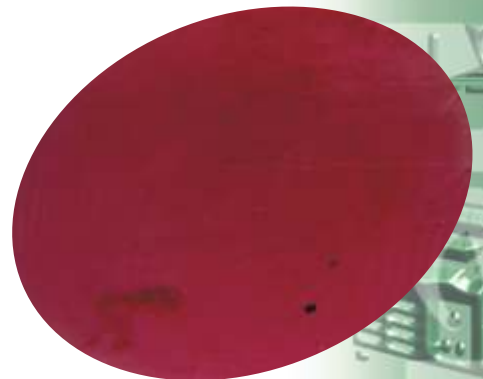
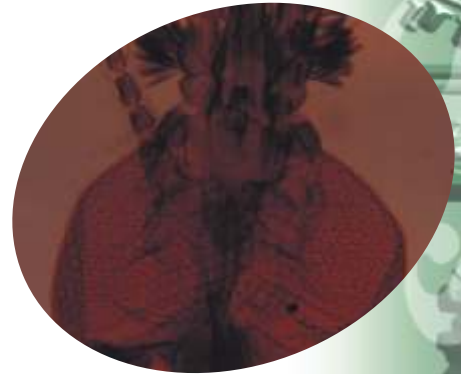
- B16381** Chick unincubated blastoderm w.m.
- B16382** Chick primitive streak (12 hrs) m.w.
- B16383** Chick 18 hrs. stage w.m.
- B16384** Chick 21 hrs. stage w.m.
- B16385** Chick 30 hrs. stage w.m.
- B16386** Chick 36 hrs. stage w.m.
- B16387** Chick 48 hrs. stage w.m.
- B16390** Chick 60 hrs. stage w.m.
- B16391** Chick 72 hrs. stage w.m.
- B16392** Chick 24 hrs. t.s. primitive streak
- B16393** Chick 36 hrs. t.s.
- B16394** Chick 72 hrs. h.l.s.
- B16395** Chick 96 hrs. h.l.s.

## MITOSIS CELL DIVISION

- B16401** Metabolic nucleus
- B16402** Anaphase
- B16403** Prophase
- B16404** Metaphase
- B16405** Telophase

## MEIOSIS CELL DIVISION

- B16411** Meiosis I All significant stages in one slide.
- B16412** Meiosis II All significant stages in one slide.





### SLIDE SETS

Very convenient and very popular. Some of these sets are given below. In addition we shall be glad to supply sets according to your requirements.

#### Sets for Primary Schools

<b>B16505</b>	Human Anatomy set	Set of 6
<b>B16510</b>	Plants set	Set of 8
<b>B16520</b>	Animals	Set of 11

#### Slide Set

<b>B16525</b>	Introduction to Histology	Set of 23
<b>B16530</b>	Advance Histology	Set of 79
<b>B16533</b>	Human Biology	Set of 24
<b>B16535</b>	Mitosis & Meiosis	Set of 10
<b>B16550</b>	General Biology Set to meet requirements of West African Examination Council	Set of 40



For Latest Information  
Regarding  
**supertek**  
Products

Kindly Visit Our Website

[www.shivsons.com](http://www.shivsons.com)  
[www.shivsons.com](http://www.shivsons.com)  
[www.shivsons.com](http://www.shivsons.com)  
[www.shivsons.com](http://www.shivsons.com)