



DISSECTING INSTRUMENTS SETS

All instruments are made of stainless steel, unless otherwise specified

DISSECTING SET, SDI - 1 **A**

Comprising 10 instruments detailed below::

- 1 Forceps, straight, fine points, 125 mm.
- 1 Forceps, straight, blunt points, 125 mm.
- 2 Needles
- 1 Section lifter
- 1 Scalpel, 38 mm blade.
- 1 Scalpel, 45 mm blade.
- 1 Scissors, straight, fine points, 125 mm.
- 1 Scissors, straight, blunt points, 125 mm
- 1 Seeker

B10901 In velvet lined wooden case

B10902 In folding pouch



DISSECTING SET SDI-2 **B**

Very popular model, comprising 14 instruments:-

- 1 Dissecting scissors, straight, fine points, 100 mm.
- 1 Dissecting scissors, straight, blunt points, 125 mm.
- 1 Dissecting forceps, straight, fine points, 100 mm.
- 1 Dissecting forceps, straight, blunt points, 125 mm.
- 1 Needle with lancet point.
- 1 Needle pointed.
- 1 Seeker.
- 1 Section lifter.
- 1 Scalpel, fixed blade, 38 mm.
- 1 Scalpel, fixed blade, 50 mm.
- 1 Blow pipe, nickelled brass
- 1 Hooks and chain set
- 1 Razor, carbon steel
- 1 Magnifying glass.

B10905 In velvet lined wooden case

B10906 In folding pouch



DISSECTING SET NO SDI-3 **C**

Similar to cat no B10905 but the fixed blade scalpels are replaced with B.P. scalpels No 3 and No 4, with 5 blades for each.

B10910

B10912 In folding pouch

DISSECTING SET NO SDI - 4 **D**

Similar to cat no B10905 but with following additions:-

- 6 T pins
- 1 Glass slide
- 5 Cover slips
- 1 Dropper
- 1 Brush

B10915 In velvet lined wooden case

B10916 In folding pouch



DISSECTING SET, INTERMEDIATE **E**

Everything needed for detailed dissections. Perfect for advanced, middle and high schools. Folding pouch provided. Comprising

- 1 Forceps, fine points, straight 125 mm.
- 1 Forceps, curved points, 125 mm
- 1 Cartilage knife
- 1 Scalpel with fixed blade, blade length 25 mm
- 1 Scalpel with fixed blade, blade length 38 mm
- 1 Straight needle
- 1 Bent needle
- 1 Probe
- 1 Scissors, fine points
- 1 Scissors, medium points
- 1 Dropper
- 1 Plastic ruler 150 mm.

B10920



DISSECTING SET, TEACHER'S **F**

Full value for money, selected instruments, in folding pouch, comprising

- 1 Scalpel handle with 6 assorted blades
- 2 Forceps
- 2 Scissors
- 2 Needle holders
- 12 Needles
- 1 Dropper
- 1 Ruler 150 mm

B10925





DISSECTING SET , ZOOLOGY **A**

High quality instruments for advanced high school and general college courses, in folding pouch, comprising

- 1 Dissecting forceps
- 1 Cartilage knife
- 1 Hooks and chain set
- 1 Tenaculum
- 1 Straight needle
- 1 Bent needle
- 1 Scissors, straight
- 1 Scissors, bent
- 2 Scalpels
- 2 Needle holders
- 1 Blowpipe
- 1 Probe
- 1 Ruler 150 mm

B10930

DISSECTING SETS AS PER YOUR SPECIFICATIONS CAN ALSO BE SUPPLIED



DISSECTING FORCEPS **B**

Stainless steel, ribbed sides, straight tips with fine points.

B10951 Length 100 mm.

B10953 Length 125 mm.

B10955 Length 150 mm.



FORCEPS **C**

Stainless steel, ribbed sides, curved tips for ease in reach, with fine points, 125 mm.

B10961



FORCEPS **D**

Stainless steel, ribbed sides, straight, with blunt points, 125 mm.

B10962

FORCEPS, ENTOMOLOGICAL

Stainless steel, with curved and flattened ends, length 120 mm.

B10967

FORCEPS, WATCH MAKER'S **E**

Stainless steel, very fine straight ends, length 105 mm, makes delicate dissection easy.

B10968



FORCEPS, COVER GLASS **F**

Stainless steel, with angled flattened ends for handling slides and cover glasses, length 110 mm.

B10970



FORCEPS, TOOTHED TIPS, TREVE'S **G**

Stainless steel, rat tooth 125 mm, makes grasping and separating skin and connective tissue on preserved specimen easy.

B10972



FORCEPS **H**

Stainless steel, extra long 300 mm, suitable for removing objects from deep containers.

B10975



FORCEPS, ARTERY, KELLY **I**

Stainless steel, box joints, straight. Scissor handles give precise control to prevent leakage from injected vessels. Finger grips have three position latch for varying pressure, blunt serrated tips, length 130 mm.

B10978



NEEDLE, WITH HOLDER **J**

Needle, straight, 33 mm length,

B10980 Mounted in wooden handle.

B10982 Mounted in plastic handle

B10983 Mounted in steel handle

B10984 As B10983 but with bent needle, 33 mm length



NEEDLE HOLDER **K**

Versatile, chrome plated brass metal needle holder with screw chuck to hold straight or bent needle securely, length 90mm, includes one straight needle.

B10988



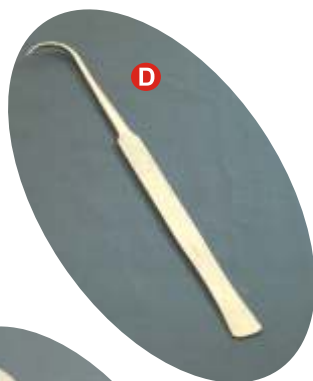
SECTION LIFTER A
Stainless steel, overall length 150 mm with bent up blade.
B10992



SEEKER B
Stainless steel, straight blunt end.
B10995



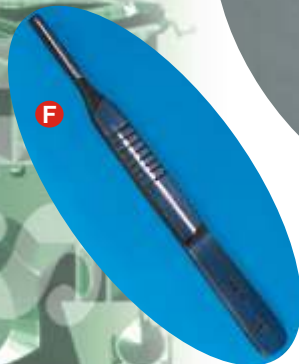
SEEKER C
Stainless steel, bent blunt end
B10996



TENACULUM D
Stainless steel, shallow curve, 125 mm
B10998



SCALPEL E
Stainless steel, handle with fixed blade,
B11001 Blade length 38 mm.
B11003 Blade length 45 mm.



SCALPEL HANDLE F
Stainless steel, Bard & Parker type, for use with removable blades
B11008 Size No. 3
B11010 Size No 4



SCALPEL, DISPOSABLE G
Plastic, sterilized, for single use, with s.s. blade No 15, wrapped in aluminium foil
B11015



SCALPEL BLADES H
Carbon steel, sterilised,

	Blade No.	Blade No	
B11020/a	No 10	B11020/g	No 21
B11020/b	No 10 A	B11020/h	No 22
B11020/c	No 11	B11020/i	No 23
B11020/d	No 12	B11020/j	No 24
B11020/e	No 15	B11020/k	No 25
B11020/f	No 20		

HOOKS & CHAIN **I**

Three s.s. hooks chained to a loop have the strength to hold large specimen in position for dissection work. Chain length 150 mm.

B11025



DISSECTING SCISSORS **J**

Stainless steel, straight, with one fine and one blunt end.

B11031 Length 110 mm.

B11033 Length 125 mm.

B11035 Length 150 mm.



DISSECTING SCISSORS **K**

Stainless steel, open shanks, fine ends, length.

B11038 110 mm

B11040 150 mm



DISSECTING SCISSORS **L**

Stainless steel, straight closed shanks, very fine ends for delicate work, length 105 mm.

B11047



DISSECTING SCISSORS

As above, with blunt ends

B11048

DISSECTING SCISSORS **M**

Stainless steel, curved, with fine ends

B11050 Length 110 mm

B11052 Length 125 mm

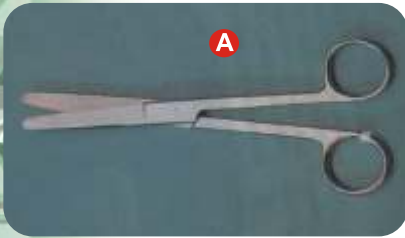


DISSECTING SCISSORS

Stainless steel, curved, with blunt ends

B11054 Length 110 mm

B11055 **H** Length 125 mm



DISSECTING SCISSORS **A**

Stainless steel, straight, with blunt ends

B11059 Length 125 mm

B11060 Length 150 mm



DISSECTING SCISSORS **B**

Stainless steel, angled, for delicate dissection, length 115 mm

B11065

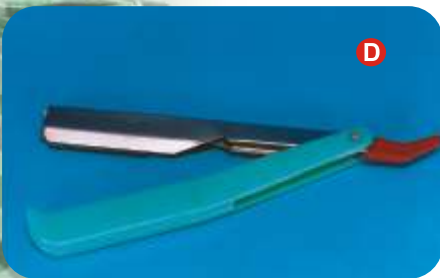


BONE CUTTER **C**

Carbon steel, chrome plated, spring loaded handle

B11070 Length 125 mm.

B11072 Length 150 mm.



RAZOR **D**

For cutting sections, carbon steel blade hollow ground on one surface, with handle, blade length 75 mm approx.

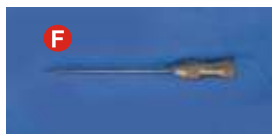
B11075



DISSECTING PIN **E**

55 mm., with plastic head

B11080



DISSECTING PIN **F**

Spike length 50 mm, with brass head

B11084



DISSECTING DISH **G**

Jointless, rectangular, anodised aluminium dish with wide lip,

Size mm

B11091 250 x 190 x 45

B11093 350 x 260 x 65

B11095 400 x 300 x 70

DISSECTING DISH BLACK WAX LINED **H**

Large enough for most specimens. Aluminium dish with special black wax layer on the bottom. Mild heating renews wax surface. The special black wax does not crack like paraffin and is ideal for dissection work.

Size 290x190x40 mm

B11100



DISSECTING DISH **I**

As above, but without wax.

B11102



BLACK WAX

For dissecting dish B11100 Pack of 1 kg.

B11104

DISSECTING DISH **J**

Galvanised iron sheet, white enamelled inside,

B11105 200 x 150 x 50 mm

B11106 250 x 200 x 50 mm

B11107 300 x 250 x 50 mm



DISSECTING DISH

Vitreous enamelled iron

B11110 250 x 200 x 50 mm

B11112 300 x 250 x 50 mm

DISSECTING DISH **K**

Stainless steel, jointless

B11115 200 x 150 x 50 mm

B11116 250 x 200 x 50 mm

B11117 300 x 200 x 50 mm

B11118 375 x 300 x 50 mm

B11120 450 X 300 x 50 mm



B11105 to B11120 can also be supplied lined either with paraffin wax or with special black wax.

DISSECTING TRAY

Polyethylene, size 450 x 350 x 75 mm

B11125



WAX

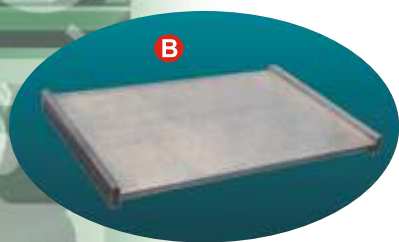
Paraffin, for dissecting trays, pack of 1 kg.

B11130

DISSECTING PINS T-HEAD **A**

Perfect pins for dissections. "T" head makes it easy to insert into pinning surface and easier to remove, reusable, plated steel.

B11138



DISSECTING BOARD **B**

Soft wood, to take dissecting awls and pins, raised short sides,

B11140 450x300mm

B11142 550x380mm



DISSECTING BLOCK **C**

Cork faced, soft wood base with cork top for pinning small specimen, size 150 x 75 mm.

B11146



ENTOMOLOGICAL PINS **D**

Black tampered steel, length 38 mm, in pack of 100 pins.

B11150



ENTOMOLOGICAL PINS STORAGE BLOCK **E**

Wood, with six holes to store entomological pins of different sizes, for easy use.

B11152



INSECT SETTING BLOCK **F**

Wood, in 5 steps of varying heights, to pin up insects and properly label the same.

B11154

E

INSECT SETTING BOX **F**

Wooden, inner sides of the lid and bottom are lined with synthetic washable sheet, suitable for repeated pinning. Double walled, a perforated fumigation chamber is provided on all sides of the bottom frame for storing insecticide. With index card holder and clips.

B11160	30x23x8 cm
B11161	38x25x8 cm
B11162	45x30x8 cm
B11163	60x50x9 cm



INSECT SETTING SHOWCASE

Box with glass top, useful for display of insect collection, for pinning insects on inside bottom only.

B11165	38x25x6 cm
B11166	45x30x6 cm
B11167	60x50x9 cm



INSECT CAGE **G**

Aluminium frame with wire mesh, hinged lid, bottom made of laminated wood.

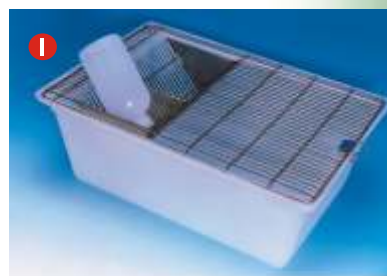
B11172	20x15x15 cm
B11174	25x20x20 cm



ANIMAL CAGE **H**

For small animals, framework covered with metal mesh. Provided with water bottle and feeding tray. An extra tray is provided below the cage for collection of animal excreta. Feeding arrangement allows removal of bin from outside of cage with automatic drop closure.

B11180	30x23x30 cm
B11182	45x45x38 cm



RABBIT CAGE **I**

Strong resilient cage body is moulded in polypropylene for its superior chemical resistance to urine and other body fluids. The body has rounded corners for easy cleaning and to avoid food entrapment and other contaminations. The extra strong wire lid, securely locked to the body top, is made of stainless steel which does not corrode. Repeatedly autoclavable

B11184	435x290x160 mm
B11185	430x270x150 mm
B11187	290x220x190 mm



HERBARIUM PRESS, LABORATORY USE **A**

Heavy wooden planks, with two tightening screws and flynuts for uniform and sufficient pressure. Flynuts need not be completely removed and may be left in the upper plank, size 450x300 mm.

B11224



HERBARIUM PRESS, FIELD USE **B**

Light and handy, seasoned wood batons fabrication, adjustable strap for putting sufficient pressure, size 450x300mm.

B11226



INSECT NET

Light weight, fine nylon netting, mounted on wire frame, removable handle with rubber grip. dia. of ring 300 mm, length of handle 750 mm.

B11232 **C** Aluminium handle.

B11233 **D** Wooden handle.

B11234 Chrome plated iron tube handle.



PLANKTON NET **E**

87 cm long collection bag made of strong bolting netting cloth suspended by muslin reinforcement and mounted on a strong wire ring of 30 cm dia. Three braided strong leads are attached to swivel front. Lower end of the bag is provided with a 5 cm opening with strong cloth pocket for tying the collection vial.

B11240



AQUATIC NET **F**

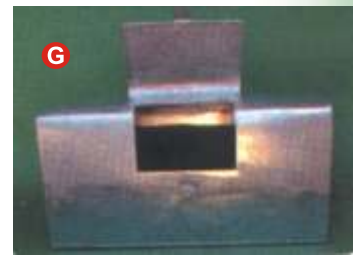
Strongly built for sweeping up of aquatic fauna and as a general utility aquatic net. Net ring and handle can be separated for ease of carriage. Strong 'D' shaped ring frame of 30 cm dia., with stout handle.

B11245

VASCULUM, BOTANICAL **G**

For collection of botanical specimen. Elegant in appearance, extremely handy and most useful for outdoor collection. Oval cross section aluminium metal body, hinged door, outside enamel painted, with hooks and shoulder strap, for specimen collection, size 600x200x300 mm.

B11250



POOTER **H**

For collecting flies, spiders and other small arthropods. Comprises 75 x 25 mm glass tube with inlet and outlet tubes through a rubber stopper. Collecting tube has a flared end and the mouth piece is with rubber tube connection with a gauze filter, to confine collected specimen to the tube.

B11260



SPECIMEN TUBES **I**

Transparent plastic, with polyethylene cap

Height x dia.

B11271	50 x 25 mm.
B11272	75 x 25 mm.
B11273	100 x 25 mm.
B11274	75 x 32 mm.
B11276	100 x 32 mm.
B11277	75 x 37 mm.
B11279	100 x 37 mm.



AQUARIUM **J**

Glass panels are sealed by silicon rubber into strong aluminium channels. Suitable for fresh or salt water.

B11310	450 x 250 x 250 mm.
B11312	600 x 250 x 250 mm.



Accessories for Aquarium

B11315	Heater
B11316	Thermostat
B11317 H	Aeration pump with diffuser
B11318	Undergravel filter

