

POLYART CHARTS

Polyart Charts are multicoloured, accurate in details, printed on plastic, laminated on both sides, washable, non-tearable and long lasting, with plastic rollers, size 75x100 cm.

HUMAN PHYSIOLOGY CHARTS

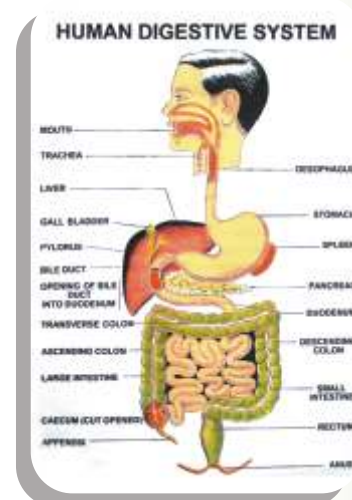
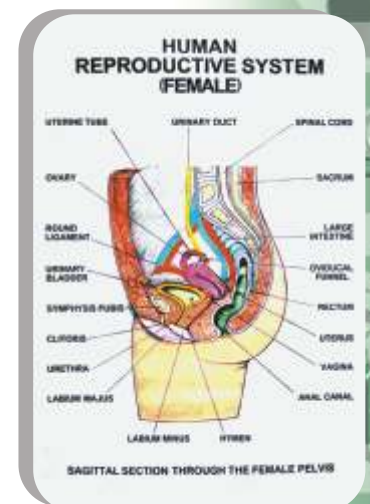
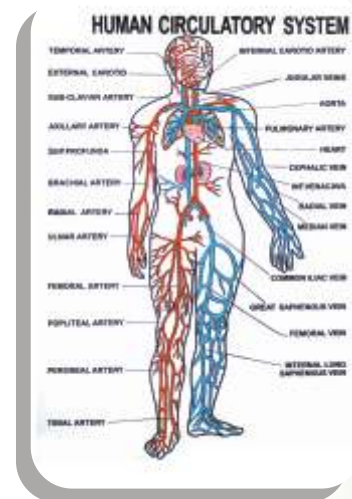
- (1) Skeletal system
- (2) Muscular system
- (3) Circulatory system
- (4) Nervous system
- (5) Digestive system
- (6) Teeth & skin
- (7) Human eye, ear & head
- (8) Lymphatic system
- (9) Respiratory system
- (10) Endocrine system
- (11) Nutrition
- (12) Immune system
- (13) Human Nose
- (14) Human Heart
- (15) Excretory system
- (16) Human Eye
- (17) Human Ear
- (18) Human Kidney
- (19) Human Lungs
- (20) Human Liver
- (21) Human Brain

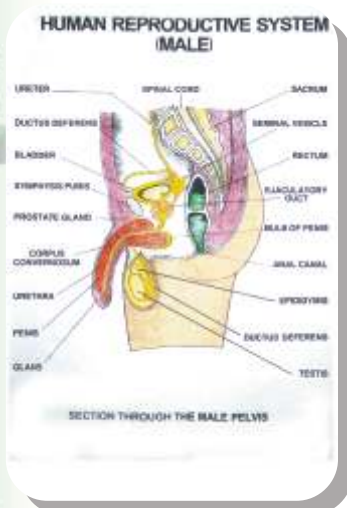
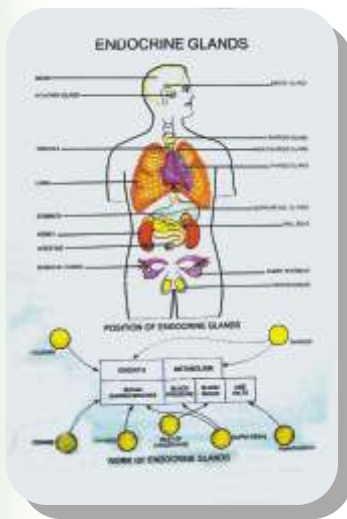
B13040

HUMAN REPRODUCTION CHARTS

- (1) Human embryological development
- (2) Human Life cycle (birth)
- (3) Human reproductive organs, male
- (4) Human reproductive organs, female

B13042





ZOOLOGY CHARTS, POLYART

Multicoloured, accurate in details, printed on plastic, laminated on both sides, with plastic rollers, size 75x100 cm. These charts are available in English or in English & Arabic combined.

- (1) Epithelial tissue, simple & stratified
- (2) Connective tissues, loose
- (3) Connective tissues skeletal (Bone Cartilage)
- (4) Connective tissues-Blood
- (5) Nerve Cells
- (6) Types of Nerve Cells
- (7) Neuroglia
- (8) Type of muscular tissues
- (9) Plasmodium Vivax, life cycle
- (10) Amphioxus Embryological Development
- (11) Sponge, External morphology with T.S.
- (12) Hydra, External morphology with T.S.
- (13) Obelia Life cycle & T.S. in Medus
- (14) Echinococcus Life Cycle
- (15) Pinworm Life cycle
- (16) Earthworm, external structure with T.S. in intestine & internal anatomy
- (17) Earthworm, circulatory system with reproductive system
- (18) Snail-L.S. through mouth
- (19) Snail-reproductive system
- (20) Crayfish-T.S. in Branchial Chamber
- (21) Crayfish Reproductive Male & Female
- (22) Cockroach Mouth parts
- (23) Cockroach, internal anatomy
- (24) Starfish, water vascular system
- (25) Starfish, Digestive system
- (26) Amphioxus General structure
- (27) Amphioxus Circulatory system
- (28) Fish Circulatory system
- (29) Fish Reproductive system for male & female
- (30) Frog circulatory system & L.S. in Heart
- (31) Frog Skeletal system & L.S. in Heart
- (32) Pigeon skeletal system with fore & hind limbs
- (33) Pigeon Arterial & Venous system
- (34) Rabbit Arterial & Venous system with L.S. in Heart
- (35) Rabbit-Reproductive system Male & Female
- (36) Classification of animals, *English only*
- (37) Typical Animal cell, *English only*

B13045

Many Charts are being developed.
Kindly inform us of your requirements.

BOTANY CHARTS, POLYART

Multicoloured, accurate in details, printed on plastic, laminated on both sides, with plastic rollers, size 75x100 cm. These charts are available in English or in English & Arabic combined.

- (1) T.S. in Dicot & Monocot stem
- (2) Pinus-1 Male & Female Strobli
- (3) L.S. Shoot Apex & its different regions
- (4) T.S. Shoot Apex & its different regions
- (5) Plant Tissue Cork
- (6) L.S. in Flower with T.S. in Anther
- (7) Plant tissue Xylem T.S. in simple Pit
- (8) Pinus II through female Strobilus L.S. through ovules
- (9) Plant tissue Collenchyma
- (10) Marchantia Life Cycle
- (11) Plant Tissue Parenchyma
- (12) L.S. in Root Tip & T.S. in its different regions
- (13) Marchantia
- (14) T.S. of Root (Secondary Growth)
- (15) Adiantum Life Cycle
- (16) Stages of formation of Female Gametophyte with the process of Pollination, Fertilisation & Formation of seed
- (17) Plant Tissue Phloem
- (18) Plant Tissue Sclerenchyma
- (19) T.S. in Stem to show growth with a drawing of Lenticel
- (20) Adiantum
- (21) T.S. Dicot & Monocot Root
- (22) Typical plant cell, *English only*
- (23) Plant Mitosis *English only*
- (24) Plant Meiosis, *English only*
- (25) Classification of Plants, *English only*

B13048

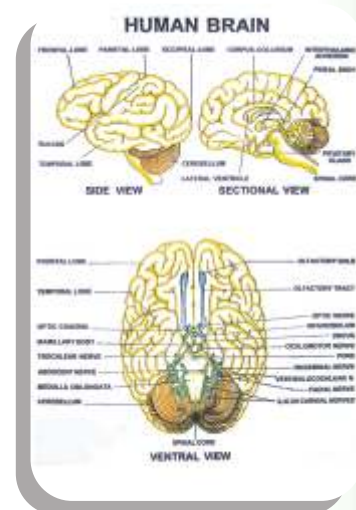
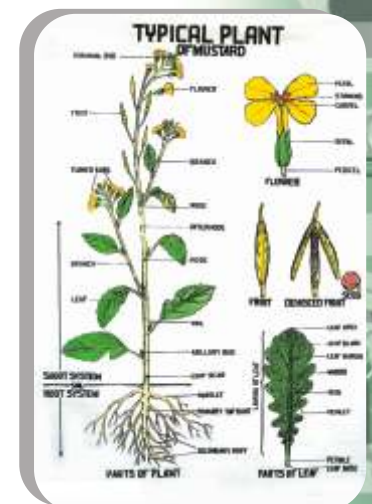
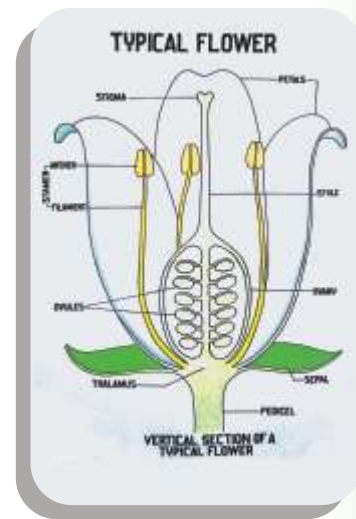
Many Charts are being developed.
Kindly inform us of your requirements.

BIO PERIODIC TABLES, POLYART

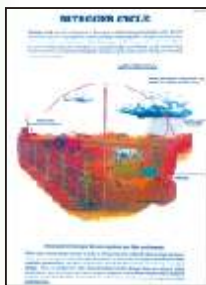
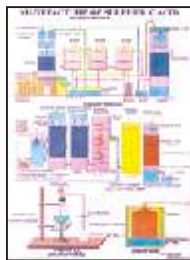
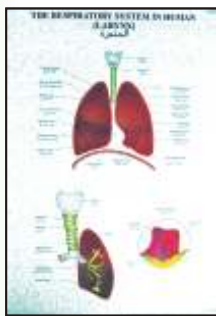
Size 100x75 cm

- (1) Periodic Table of Rare & Endangered species
- (2) Periodic Table of Fishes
- (3) Periodic Table of Vegetables
- (4) Periodic Table of Fruits & Nuts
- (5) Periodic Table of Birds

B13052



Available in English or Arabic & English combined



SPECIAL HUMAN PHYSIOLOGY CHARTS POLYART

Size 75X100 cm. Fitted with Plastic Rollers
{Available in English or Arabic & English Combined}

1. The Lymphatic System
2. Excretory System - Kidney, L.S.
3. Excretory System - Ureters
4. Excretory System - Urinary bladder
5. Excretory System - Malpighian Corpuscle
6. T.S. Skin
7. Reproductive System
8. Brain External Features
9. L. S. Eye - Eye Muscle
10. L. S. Eye - Tear glands
11. L. S. Eye - Physiological diseases of eye
12. Ear and its parts
13. Skeletal System
14. Endocrine glands
15. Digestive System
16. Circulatory System - Types of blood cells
17. Circulatory System - L. S. in heart & T. S. in blood vessel
18. Circulatory System - Vein valves
19. Circulatory System - Systematic & pulmonary circulation
20. Respiratory System - Larynx
21. Respiratory System - Trachea
22. Respiratory System - Alveolus
23. L. S. in Central Nervous System (CNS)
24. Region in which the nerval impulses transport to central nervous system through the synapse
25. Human Reflection Arch

B13055

GENERAL SCIENCE CHARTS POLYART

Size 75X100 cm. Fitted with Plastic Rollers
{Available in English Only}

- (1) Insects
- (2) Reproduction of Plants (Part 1) Seed parts, Germination & Pollination
- (3) Reproduction of Plants (Part II) Mendel's Law, supply of Oxygen, Carbon Dioxide and Nitrogen.
- (4) The Bird, Food, Beaks and Jaws
- (5) Plants and their parts (Part I) Flower
- (6) Plants and their parts (Part II) Root & Stem
- (7) Types of Animals (Part-1) Paramecium, Amoeba, Hydra, Worm, Crayfish, Spider
- (8) Types of Animals (Part -II) Fish, Amphibians, Reptiles, Birds and Mammals
- (9) Foods and their uses Part-I
- (10) Foods and their uses Part -II
- (11) Plant Diseases and their control
- (12) Animal Diseases and their control
- (13) Human Body - all parts
- (14) Germination of Seeds
- (15) Classification of Plants
- (16) Classification of Animals
- (17) Oxygen Cycle
- (18) Carbon Cycle
- (19) Nitrogen Cycle

B13061

POLYART CHARTS IN PHYSICS & CHEMISTRY ARE ALSO AVAILABLE. DETAILS ON REQUEST

HAND DRAWN CHARTS ON REXINE

All Charts are made on PVC rexine, hand drawn, waterproof, in fast multicolours with a black background. Each chart is provided with rollers to hang on wall. Size 75x100 cm.

ZOOLOGY

CELLS & TISSUES

- 1 Typical Animal cell ultra structure
- 2 Animal Mitosis
- 3 Animal Meiosis
- 4 Animal Tissues I - Connected tissues
- 5 Animal Tissues II - Epithelial and muscular tissues
- 6 Animal Tissues III - Blood and nerve tissues
- 7 Gamatogenesis
- 8 Fertilization in Animals
- 9 Ogenesis
- 10 Spermatogenesis

B13080

PROTOZOA

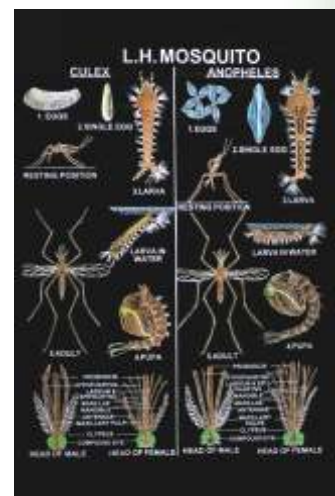
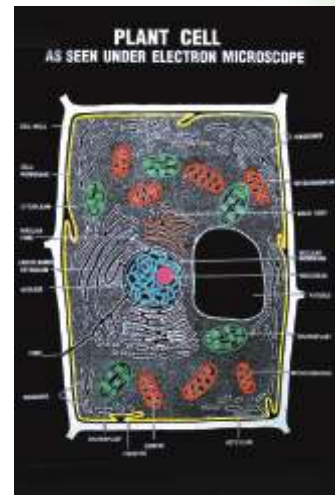
- 1 Amoeba structure & locomotion
- 2 Plasmodium (Malarial Parasite), stages of development
- 3 Paramecium structure
- 4 Paramecium Reproduction
- 5 Euglena structure & Life History
- 6 Entomoeba Histolytica - structure & L.H.

B13082

PORIFERA, COELENTERATA, PLATYHELMINTHES

- 1 Phylum Porifera showing sponges of principal types
- 2 Sycon Development structure & L.H.
- 3 Obelia structure & Life History
- 4 Hydra structure & Internal Anatomy
- 5 Ascaris Internal structure of male & female
- 6 Tapeworm structure & Life History
- 7 Liverfluke structure & Life History
- 8 Hookworm, structure & Life History

B13084



ANNELIDA

- 1 Earthworm Internal Anatomy
- 2 Earthworm Development
- 3 Earthworm Reproductive system
- 4 Earthworm Nervous system
- 5 Earthworm Digestive system
- 6 Earthworm Excretory system
- 7 Earthworm Circulatory system
- 8 Earthworm T.S. through Gizzard
- 9 Earthworm T.S. through Pharyngeal Region
- 10 Earthworm T.S. through Intestinal Region
- 11 Earthworm Respiratory system
- 12 Hirudinaria External Coelom & Haemocoelmic
- 13 Hirudinaria External Coelom & Haemocoelmic Part
- 14 Hirudinaria External Coelom & Haemocoelmic Part
- 15 Hirudinaria External Coelom & Haemocoelmic Part - III

B13086

ARTHROPODA

- 1 Food Grain Pests
- 2 Housefly Life History
- 3 Mosquito Life History showing comparison of Culex & Anopheles
- 4 Butterfly Life History
- 5 Honey Bee Life History
- 6 Silkworm Life History
- 7 Grasshopper Life History
- 8 Cockroach External Character & M.P.
- 9 Cockroach L.H.
- 10 Cockroach Digestive system
- 11 Cockroach Respiratory system
- 12 Cockroach Circulatory system
- 13 Cockroach Nervous system
- 14 Cockroach Reproductive system
- 15 Prawn Internal Anatomy
- 16 Prawn External Anatomy
- 17 Prawn Reproductive system
- 18 Prawn Digestive system
- 19 Prawn Excretory system
- 20 Prawn Nervous system
- 21 Prawn Circulatory system
- 22 Scorpion External Character, Dorsal & Ventral View

B13088

MOLLUSCA

- 1 Pila External character
- 2 Pila Reproductive system
- 3 Pila Circulatory system
- 4 Pila Nervous system
- 5 Pila Sense organs
- 6 Pila Respiratory system
- 7 Pila Digestive system
- 8 Unio External character
- 9 Unio Circulatory system
- 10 Unio Internal Anatomy
- 11 Unio Nervous system
- 12 Unio Respiratory system
- 13 Unio Digestive system

B13090

ECHINODERMATA

- 1 Starfish External Character & General Anatomy
- 2 Starfish Water Vascular System

B13092

PISCES

- 1 Scoliodon External Character
- 2 Scoliodon General Viscera
- 3 Scoliodon Digestive System
- 4 Scoliodon Brain, different views
- 5 Scoliodon Skeleton
- 6 Scoliodon Skull
- 7 Scoliodon Male Urinogenital system
- 8 Scoliodon Female Urinogenital system
- 9 Scoliodon Venous system
- 10 Scoliodon Cranial Nervous system
- 11 Scoliodon Receptor organs
- 12 Labeo Rohita External character
- 13 Labeo Rohita Axial Skeleton
- 14 Labeo Rohita Skull
- 15 Amphioxus External character
- 16 Amphioxus General anatomy
- 17 Amphioxus T.S. through different regions
- 18 Amphioxus Development
- 19 Amphioxus Excretory system

B13095

AMPHIBIA

- 1 Frog External character
- 2 Frog Internal Anatomy
- 3 Frog Skeleton
- 4 Frog Skull, different views
- 5 Frog Development part I-showing stages from egg to Gastrulation
- 6 Frog Development part II-showing Gastrula to newly hatched Tadpole
- 7 L. H. Frog showing larvae development Metamorphosis
- 8 Frog Digestive system
- 9 Frog Nervous system
- 10 Frog Reproductive system
- 11 Frog Excretory system
- 12 Frog Arterial system
- 13 Frog Venous system
- 14 Frog Respiratory system
- 15 Frog Muscular system
- 16 Frog Lymphatic system
- 17 Frog Cranial Nervous system
- 18 Frog Sense organs
- 19 Frog V.S.Skin
- 20 Frog Brain different views
- 21 Frog Heart different views
- 22 Frog Eye

B13097

REPTILIA

- 1 Types of Reptiles
- 2 Snakes Poisonous & Non-poisonous Types
- 3 Varanus Skull different views
- 4 Varanus Skeleton
- 5 Varanus Circulatory System
- 6 Varanus Excretory System
- 7 Lizard various systems (Each system on a separate chart)
- 8 Uromastix various systems (Each system on a separate chart)

B13100

AVES

- 1 Pigeon External Character
- 2 Pigeon Internal Anatomy
- 3 Pigeon Skeleton
- 4 Pigeon various systems
- 5 Fowl Skeleton
- 6 Chick Development
- 7 Chick embryo 16 Hours
- 8 Chick embryo 18 Hours
- 9 Chick embryo 24 Hours
- 10 Chick embryo 27 Hours
- 11 Chick embryo 28 Hours
- 12 Chick embryo 30 Hours
- 13 Chick embryo 33 Hours
- 14 Chick embryo 43 Hours
- 15 Chick embryo 48 Hours
- 16 Chick embryo 56 Hours
- 17 Chick embryo 72 Hours
- 18 Chick embryo 96 Hours
- 19 Beaks of Birds
- 20 Claws of Birds
- 21 Types of Birds

B13102

MAMMALS

- 1 Rat External Development
- 2 Rat General Anatomy
- 3 Rat Digestive system
- 4 Rat Male Reproductive system
- 5 Rat Female Reproductive system
- 6 Rat Arterial system
- 7 Rat Venous system
- 8 Rat Nervous system
- 9 Rat Respiratory system
- 10 Rat Skeleton
- 11 Rat Brain, different views
- 12 Rat Heart, different views
- 13 Rabbit External Development
- 14 Rabbit General Anatomy
- 15 Rabbit Digestive system
- 16 Rabbit Male Reproductive system
- 17 Rabbit Female Reproductive system
- 18 Rabbit Arterial system
- 19 Rabbit Venous system
- 20 Rabbit Nervous system
- 21 Rabbit Respiratory system
- 22 Rabbit Skeleton
- 23 Rabbit Brain, different views
- 24 Rabbit Heart, different views

B13104

COMPARATIVE STUDY

- 1 Vertebrate Hearts
- 2 Vertebrate Brains
- 3 Vertebrate Skulls
- 4 Vertebrate Limbs
- 5 Vertebrate Girdles
- 6 Vertebrate Urinogenital system
- 7 Vertebrate Embryos
- 8 Vertebrate Arterial arches circulation
- 9 Vertebrate Genital apparatus & venous system

B13106

EVOLUTION

- 1 Animal Kingdom (Classification)
- 2 Evolution of Man

B13108

BOTANY CHARTS, Rexine

CYTOLOGY

- 1 Cell Membrane showing structure & functions
- 2 Cell Wall, showing structure & functions
- 3 Endoplasmic Reticulum showing structure & functions
- 4 Mitochondrion - showing structure & functions
- 5 Golgi Complex showing structure & functions
- 6 Chloroplast - showing structure & functions
- 7 Nucleus - showing structure & functions
- 8 Chromosome - showing structure & functions
- 9 D.N.A. - showing structure & functions
- 10 R.N.A. - showing structure & functions

B13112

GENETICS

- 1 Monohybrid Crossing complete dominance
- 2 Monohybrid Crossing incomplete dominance
- 3 Dihybrid Crossing
- 4 Monohybrid Crossing
- 5 Mendelian explanation of Cross between tall & dwarf races in Garden Pea
- 6 Sex linked inheritance Drosophila
- 7 Mendelian Heridity of Blue & Adulsian fowls
- 8 Mendelian Explanation of the breeding behaviour of Red & White flowering in 4 o' clock

B13114

ALAGE & FUNGI

- 1 Chlamydomonas, General structure & Life History
- 2 Ulothrix general structure and L.H.
- 3 Oedogonium Life Cycle
- 4 Spirogyra structure & conjugation
- 5 Chara structure & L.H.
- 6 Volvox structure & L.H.
- 7 Oscillatoria structure & L.H.
- 8 Nostoc structure & L.H.
- 9 Batrachospermum structure & L.H.
- 10 Polysiphonia structure & L.H.
- 11 Ectocarpus structure & L.H.
- 12 Dictyota structure & L.H.
- 13 Fucus structure & L.H.
- 14 Rhizopus structure & L.H.
- 15 Mucor structure & L.H.
- 16 Yeast
- 17 Bacteria - I showing structure and forms
- 18 Bacteria - II showing reproduction
- 19 Virus types, structure & L.H.
- 20 Penicillium
- 21 Albugo(Cystopus) structure & reproduction
- 22 Phytophthora structure & L.H.
- 23 Puccinia graminis structure & L.H.
- 24 Agricis structure & life history

B13116

BRYOPHYTA, PTERIDOPHYTA

- 1 Riccia structure & reproduction
- 2 Marchantia structure & Life History
- 3 Anthoceros structure & reproduction
- 4 Moss (Funaria) life history
- 5 Selaginella structure & reproduction
- 6 Psilotum structure & life history
- 7 Marselia structure & reproduction
- 8 Lycopodium structure & life history
- 9 Equisetum structure & reproduction
- 10 Fern (Aspidium) structure & life history
- 11 Fern (Pteris) structure & life history
- 12 Fern (Nephrolapis) structure & life history

B13118

GYMNOSPERMS

- 1 Cycas life history
- 2 Cycas Anatomy
- 3 Cycas stem T.S.
- 4 Gnetum structure & life history
- 5 Ephedra structure & anatomy
- 6 Pinus structure & life history
- 7 Pinus anatomy
- 8 Pinus leaf
- 9 Pinus stem
- 10 Pinus stem. secondary growth

B13120

ANGIOSPERMS

- 1 Plant cell ultra structure
- 2 Mitosis in plants
- 3 Meiosis in plants (1st & 2nd division shown in one chart)
- 4 Structure of chromosome during mitosis
- 5 Structure of chromosome during meiosis
- 6 Typical plant
- 7 Plant kingdom showing flowering & non-flowering plants
- 8 Flowering plants (A classification)
Hydrophytic plants
- 9 Non-flowering plants (A classification)
Xerophytic plants
- 10 Mesophytic plants
- 11 Epiphytic plants
- 12 Insectivorous plants
- 14 Fossil plants
- 15 Comparison of dicot & monocot plants

B13122

SEEDS & FRUITS

- 1 Maize seed germination
- 2 Gram seed germination
- 3 Bean seed germination
- 4 Castor seed germination
- 5 Pea seed germination
- 6 Dispersal of seeds & fruits
- 7 Classification of fruits

B13124

ROOTS, STEMS, LEAVES

- 1 T.S. Dicot root
- 2 T.S. Monocot root
- 3 T.S. Dicot stem
- 4 T.S. Monocot stem
- 5 T.S. Dicot leaf
- 6 T.S. Monocot leaf
- 7 Root modification
- 8 Stem modification (Aerial)
- 9 Leaf modification
- 10 T.S. dicot stem secondary growth
- 11 Vegetative propagation
- 12 Artificial propagation
- 13 Specialised stems
- 14 Typical leaf showing parts
- 15 Types of leaves

- 16 Simple leaves
- 17 Stipules
- 18 Leaf venation
- 19 Compound leaves
- 20 Phyllotaxy
- 21 T.S. Dicot root
- 22 Leaf Lamina secondary growth

B13126

FLOWER & EMBRYOLOGY

- 1 Typical flower showing parts
- 2 Fertilization showing germination of pollen
- 3 T.S. Anther & its development
- 4 Germination of pollen grain and development of male Gametophyte
- 5 Megasporogenesis
- 6 Development of embryo and endosperms
- 7 Development of embryo in sagittaria
- 8 Embryo in Capsella
- 9 Microsporangium
- 10 Types of emchryo sacs
- 11 Forms of Androecium
- 12 Form of Gynaecium
- 13 Development of Monocot embryo
- 14 Placentation
- 15 Aestivation
- 16 L.H. Datura
- 17 Inflorescence Part - I showing simple racemose & simple cymose
- 18 Inflorescence Part - II showing compound & special
- 19 Pollination different types
- 20 Foms of ovules
- 21 Foms of Calx & corolla

B13128

HISTOLOGY

- 1 Plant Anatomy Part-I showing simple tissues, parenchyma, collenchyma & sclerenchyma
- 2 Plant Anatomy Part-II showing complex tissues, Xylem
- 3 Plant Anatomy Part-III showing complex tissues, Phloem

B13130

TAXONOMY

RENUNCULACEAE

- 1 Ranunculus Sceleratus
- 2 Delphinium Ajacis

CRUCIFERAE

- 3 Chrossica Campestris (Mustard)

PAPEAVERACEAE

- 4 Papaver Rhoeas (Garden Poppy)
- 5 Argemone Mexicana

MALVACEAE

- 6 Althaea Rosea
- 7 Hibiscus Rosa
- 8 Gossypium Herchaceum

RUTACEAE

- 9 Citrus aurantium
- 10 Murraya Exotica

LEGUMINOSAE

- 11 Lathyrus odoratus
- 12 Cassia Fistula
- 13 Acacia arabica

ROSAEAE

- 14 Rosa indica
- 15 Pyriis Malus
- 16 Prunus Persica

CUCURCHITACEAE

- 17 Lufa aegyptiaca
- 18 Musk Melon

CHENOPODIACEAE

- 19 Chenopodium album

EUPHORABIACEAE

- 20 Ricinus Communis
- 21 Euroibia Pilulifera
- 22 Euroibia Splendens

POLYGONACEAE

- 23 Polygonaceae (Polygonium)

COMPOSITEAE

- 24 Helianthus annuus
- 25 Sonchus asper

SOLANACEAE

- 26 Solanaceae Nigrm
- 27 Petunia Hychride

ASCLEPIADACEAE

- 28 Calotropis procea
- 29 Cryptostegia grandiflora

LABIATAE

- 30 Salvia officinalis
- 31 Ocimum Chasilicum

APOCYNACEAE

- 32 Nerium odorum

ANNOANCEAE

- 33 Artachotrys odoratissimus
- 34 Annona squamosa

LILIACEAE

- 35 Asphodelu tenuifolius
- 36 Allium cepa

GRAMINEAE

- 37 Avena Sativa
- 38 Zea Mays

UMCHELLIFERAE

- 39 Coriandrum Sativum

CONVOLVULACEAE

- 40 Ipomoea Palmata

B13140

HUMAN ANATOMY CHARTS, Rexine

- 1 Human Muscular system
- 2 Human Skeleton - I showing entire skeleton
- 3 Human Skeleton- II showing axial skeleton, thoracic vertebra
- 4 Human Skeleton- III showing pectoral & pelvic girdle, hind & fore limbs
- 5 Human Nervous system
- 6 Autonomic Nervous system
- 7 Human Circulatory Arterial system
- 8 Human Circulatory Venous system
- 9 Human Lymphatic system
- 10 Human Digestive system
- 11 Human Respiratory system
- 12 Urinary Tract system
- 13 Human Reproductive system, female
- 14 Human Reproductive system, male
- 15 Human Ductless (endocrine) glands

- 16 Human Heart
- 17 Human Brain
- 18 Human Spinal Nerves
- 19 Vertebral Column
- 20 Human skull
- 21 Human Head & Neck
- 22 Human Eye
- 23 Human Ear
- 24 Human Ear, Nose & Throat
- 25 Human Skin
- 26 Human Hair
- 27 Shoulder & Elbow
- 28 Hand & Wrist
- 29 Hip & Knee
- 30 Foot & Ankle
- 31 Human Teeth & Skin
- 32 Human Liver
- 33 Human Kidney
- 34 Pregnancy & Birth
- 35 Pharynx & Larynx
- 36 Human Embryo & Foetal Development
- 37 Human body dissected to show all parts

B13145

Any chart of your specification can also be made

Charts on Physiology, Forensic Science, Pharmacology, Bio-chemistry, Physics & Chemistry are also available in this series. Details on request.